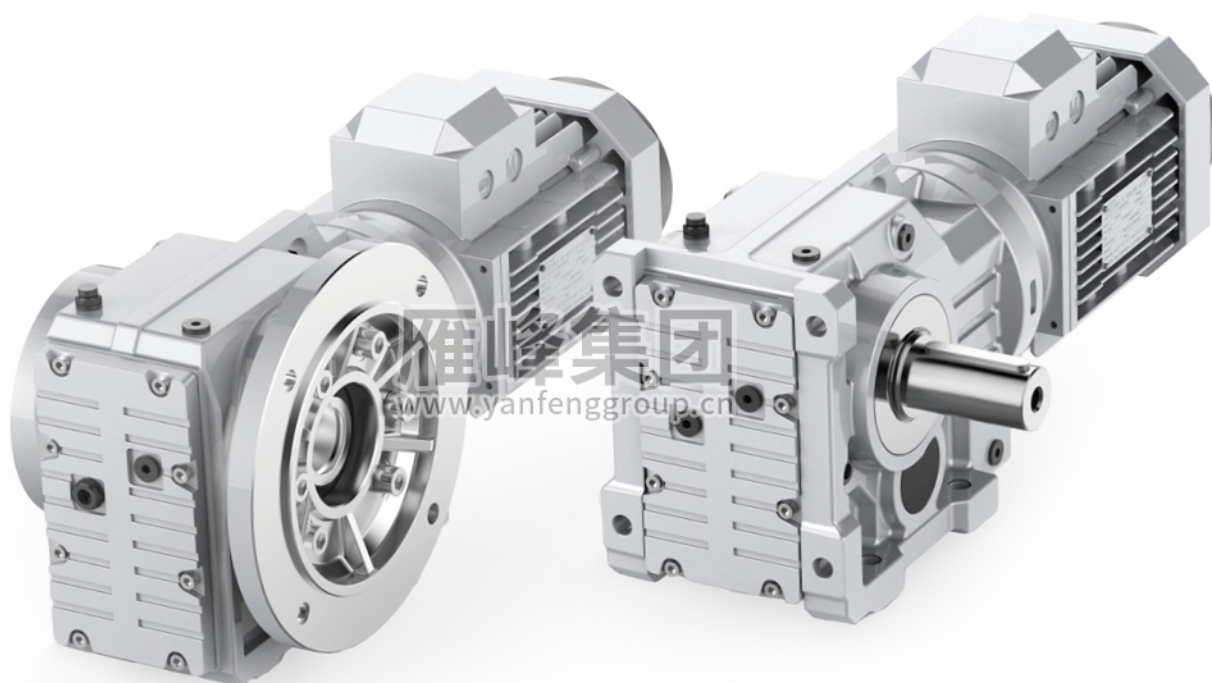
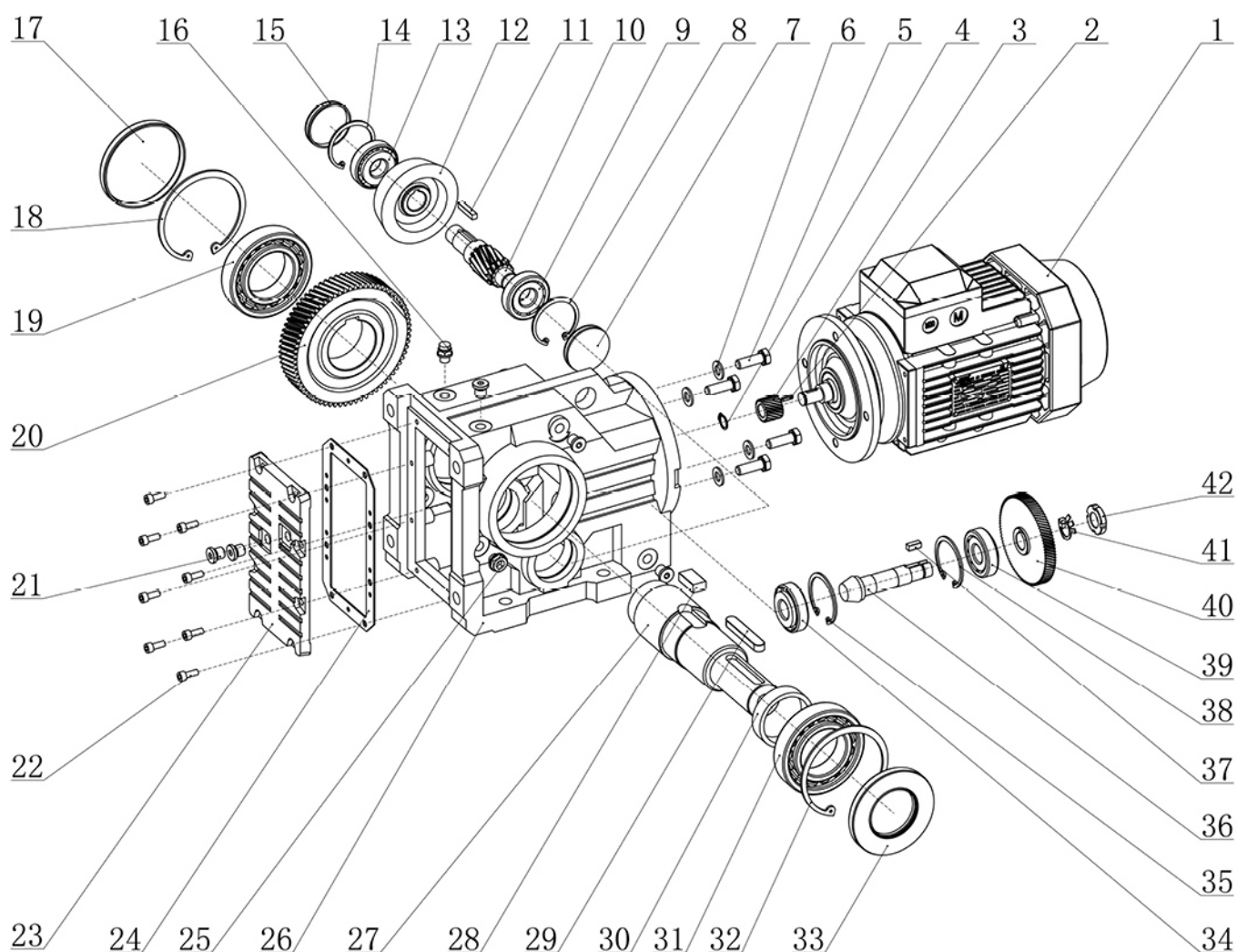


YFK SERIES

103

- ★ 三层高密分子涂漆，
隔绝灰尘更耐高温。
- ★ 高端滚珠轴承，
减少摩擦提升传动效率。
- ★ 优质合金钢精密磨齿，
提高啮合精度保证品质。



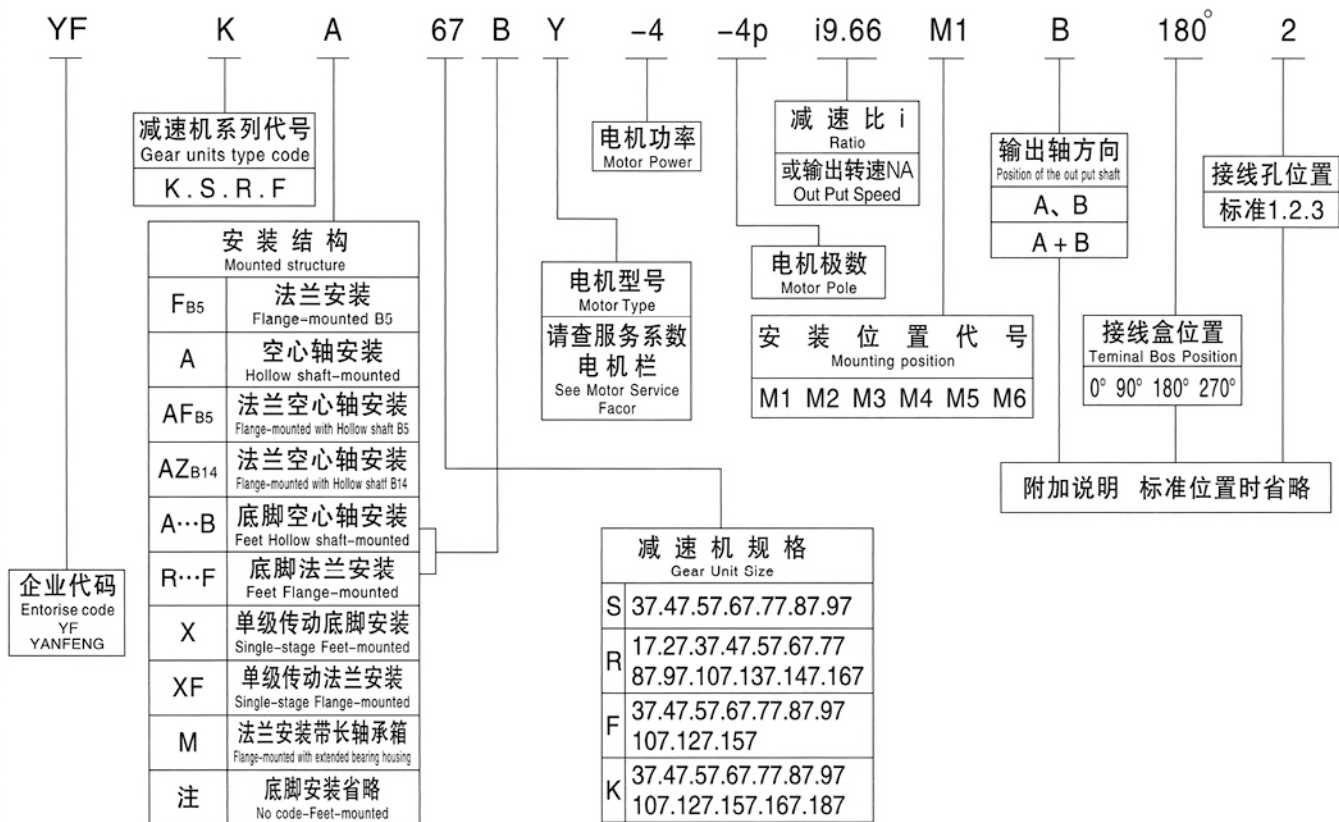


K系列爆炸图

1.电机	12.锥齿轮	23.箱盖	34.轴承
2.平键	13.轴承	24.密封垫	35.孔用卡环
3.齿轮	14.孔用挡圈	25.油镜	36.锥齿轴
4.轴用挡圈	15.平面油封	26.箱体	37.平键
5.螺栓	16.通气帽	27.输出轴	38.孔用挡圈
6.平垫圈	17.平面油封	28.平键	39.轴承
7.平面油封	18.孔用挡圈	29.平键	40.齿轮
8.孔用挡圈	19.轴承	30.轴套	41.止动圈
9.轴承	20.齿轮	31.轴承	42.圆螺母
10.齿轴	21.螺塞	32.孔用挡圈	
11.平键	22.螺钉	33.骨架油封	

YFR.YFF.YFK.YFS

型号与标记:
Type Designations:



选型方法

减速机是按载荷平稳，每天工作时间一定和少量起停次数的情况设计的，而在实际使用中往往不是处于此种理想状况，因此必须按照实际情况的载荷类型、运行时间、起动频率来确定工作机系数 f_1 、原动机系数 f_2 、起动系数 f_3 。使用小于或等于选型表中的服务系数 f_B ，即 $f_1 \times f_2 \times f_3 \leq f_B$ 。或将工作机所需的转矩乘以服务系数 ($f_1 \times f_2 \times f_3$) 应小于或等于减速机的许用转矩。

即 $T_N \geq T_2 \times f_1 \times f_2 \times f_3$

- f_1 — 工作机系数 (见表1)
- f_2 — 原动机系数 (见表2)
- f_3 — 起动系数 (见表3)
- T_2 — 工作机所需转矩
- T_N — 减速机许用转矩 (见表13)

YFK系列和YFT系列螺旋锥齿减速机如果只承受单向载荷则最好注明旋转方向 (从输出端方向看)，这样有利于改善螺旋锥齿轮的受力状况。

我公司可承接特殊规格产品的订货，并可为客户提供专用设计服务。

本样本中如有改进之处，不另作通知，请谅解。

Type selection method

Gear units are designed under the circumstance of steady load, stated operating time per day and a few starting times. but the practical condition will be not as perfect as the designed circumstance. so we must confirm driven machine factor f_1 , prime mover factor f_2 , starting factor f_3 according to actual load type, operating time, starting frequency. Let it less than or equal to the service factor f_B of selection table, viz $f_1 \times f_2 \times f_3 \leq f_B$. the needed torque of service machine multiply the service factor ($f_1 \times f_2 \times f_3$) should less than or equal to gear units, permissible torque.

Viz $T_N \geq T_2 \times f_1 \times f_2 \times f_3$

- f_1 — driven machine factor (see table 1)
- f_2 — prime mover factor (see table 2)
- f_3 — starting factor (see table 3)
- T_2 — the needed torque of driven machine
- T_N — gear units, permissible torque (see table 13)

If the K series and T series spiral bevel gear units can only bear single direction load, please indicate the rotating direction (see from output side), which is good for improving the pressing state of the spiral bevel gear.

We accept the orders of products of special specification, and provide our customer with exclusive design service.

Design and specifications are subject to change without notice, Please forgive

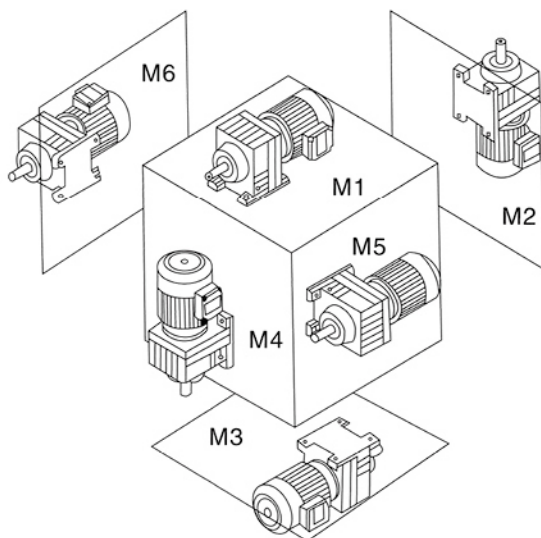
输入功率及许用转矩
Input power rating and retransmissible torque

表13 Table13

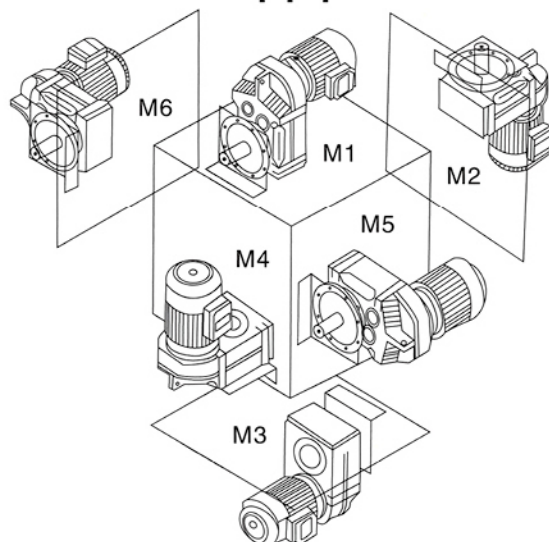
机 型 T Y P E		Y F R										Y F R F															
规格 SIZE		17	27	37	47	57	67	77	87	97	107	137	147	167	17	27	37	47	57	67	77	87	97	107	137	147	167
输入功率 INPUT POWER RATING(KW)	0.12-0.75	0.12-3	0.12-3	0.12-3	0.12-5.5	0.12-7.5	0.12-7.5	0.18-11	0.55-22	0.55-30	2.2-45	5.5-55	11-90	11-160	0.12-3	0.12-3	0.12-3	0.12-5.5	0.12-7.5	0.12-7.5	0.18-11	0.55-22	0.55-30	2.2-45	5.5-55	11-90	11-160
转动比 RATIO	383-8164	3.37-135.09	3.83-134.8	3.83-176.88	4.39-186.89	4.29-199.81	5.31-195.24	5.3-246.54	4.5-289.74	5.04-251.17	5.15-223.6	5-163.31	5-229.71		3.37-135.09	3.83-134.8	3.83-176.88	4.39-186.89	4.29-199.81	5.31-195.24	5.3-246.54	4.5-289.74	5.04-251.17	5.15-223.6	5-163.31	5-229.71	
许用转矩 PERMISSIBLE TORQUE(N·M)	87	128	196	305	440	595	705	1310	2110	4380	7910	12700	17700		128	196	305	440	595	705	1310	2110	4380	7910	12700	17700	
机 型 T Y P E		Y F R X										Y F R X F															
规格 SIZE	37	57	67	77	87	97	107								57	67	77	87	97	107							
输入功率 INPUT POWER RATING(KW)	0.12-1.1	0.12-5.5	0.12-7.5	1.1-11	3-22	5.5-30	5.5-45								0.12-5.5	0.12-7.5	1.1-11	3-22	5.5-30	5.5-45							
转动比 RATIO	1.62-4.43	1.3-5.5	1.4-6.07	1.42-5.63	1.39-6.45	1.42-5.79	1.44-6.63								1.3-5.5	1.4-6.07	1.42-5.63	1.39-6.45	1.42-5.79	1.44-6.63							
许用转矩 PERMISSIBLE TORQUE(N·M)	20	71	120	215	395	600	810								71	120	215	395	600	810							
机 型 T Y P E		Y F F										Y F F F															
规格 SIZE	37	47	57	67	77	87	97	107	127	157					47	57	67	77	87	97	107	127	157				
输入功率 INPUT POWER RATING(KW)	0.12-3	0.12-3	0.12-5.5	0.18-5.5	0.37-11	0.75-22	1.1-30	2.2-45	7.5-90	11-200					0.12-3	0.12-5.5	0.18-5.5	0.37-11	0.75-22	1.1-30	2.2-45	7.5-90	11-200				
转动比 RATIO	3.77-128.51	8.96-190.76	2.18-199.7	3.97-228.99	4.28-281.71	4.12-270.68	4.57-276.77	6.22-254.4	4.68-170.83	11.92-257.43					8.96-190.76	2.18-199.7	3.97-228.99	4.28-281.71	4.12-270.68	4.57-276.77	6.22-254.4	4.68-170.83	11.92-257.43				
许用转矩 PERMISSIBLE TORQUE(N·M)	196	405	605	810	1490	2940	4310	7840	11000	16800					405	605	810	1490	2940	4310	7840	11000	16800				
机 型 T Y P E		Y F K										Y F K A F															
规格 SIZE	37	47	57	67	77	87	97	107	127	157	167	187			47	57	67	77	87	97	107	127	157	167	187		
输入功率 INPUT POWER RATING(KW)	0.18-3	0.18-3	0.18-5.5	0.18-5.5	0.55-11	0.75-22	1.1-30	3-45	7.5-90	11-200	11-200	18.5-200			0.18-3	0.18-5.5	0.18-5.5	0.55-11	0.75-22	1.1-30	3-45	7.5-90	11-200	11-200	18.5-200		
转动比 RATIO	5.36-106.38	5.81-131.87	6.57-145.3	7.28-144.79	7.24-192.18	7.21-197.37	8.71-176.05	8.69-143.47	8.68-146.07	12.65-146.07	17.34-164.5	17.18-179.86			5.81-131.87	6.57-145.3	7.28-144.79	7.24-192.18	7.21-197.37	8.71-176.05	8.69-143.47	8.68-146.07	12.65-146.07	17.34-164.5	17.18-179.86		
许用转矩 PERMISSIBLE TORQUE(N·M)	156	400	600	785	1510	2760	4300	7210	13000	17800	31500	49400			400	600	785	1510	2760	4300	7210	13000	17800	31500	49400		
机 型 T Y P E		Y F S										Y F S A F															
规格 SIZE	37	47	57	67	77	87	97								47	57	67	77	87	97							
输入功率 INPUT POWER RATING(KW)	0.12-1.1	0.12-1.5	0.18-3	0.25-5.5	0.75-7.5	0.75-15	1.5-22								0.12-1.5	0.18-3	0.25-5.5	0.75-7.5	0.75-15	1.5-22							
转动比 RATIO	6.8-157.43	7.28-201	7.28-201	7.56-217.41	8.06-256.47	7.88-288	8.26-286.4								7.28-201	7.28-201	7.56-217.41	8.06-256.47	7.88-288	8.26-286.4							
许用转矩 PERMISSIBLE TORQUE(N·M)	93	170	245	520	1170	2130	3990								170	245	520	1170	2130	3990							

YFR、YFF、YFK、YFS系列

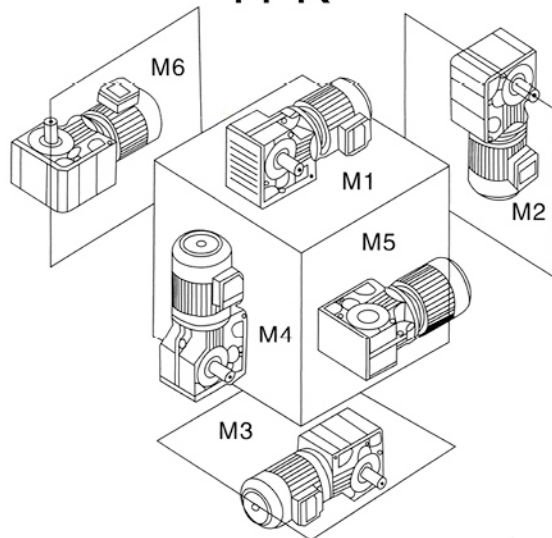
YFR



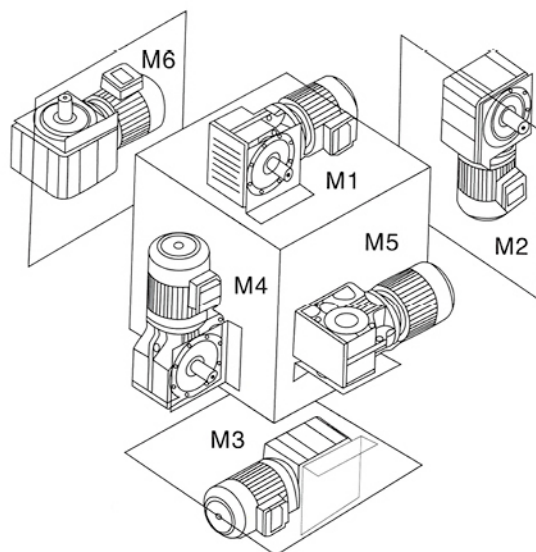
YFF



YFK



YFS



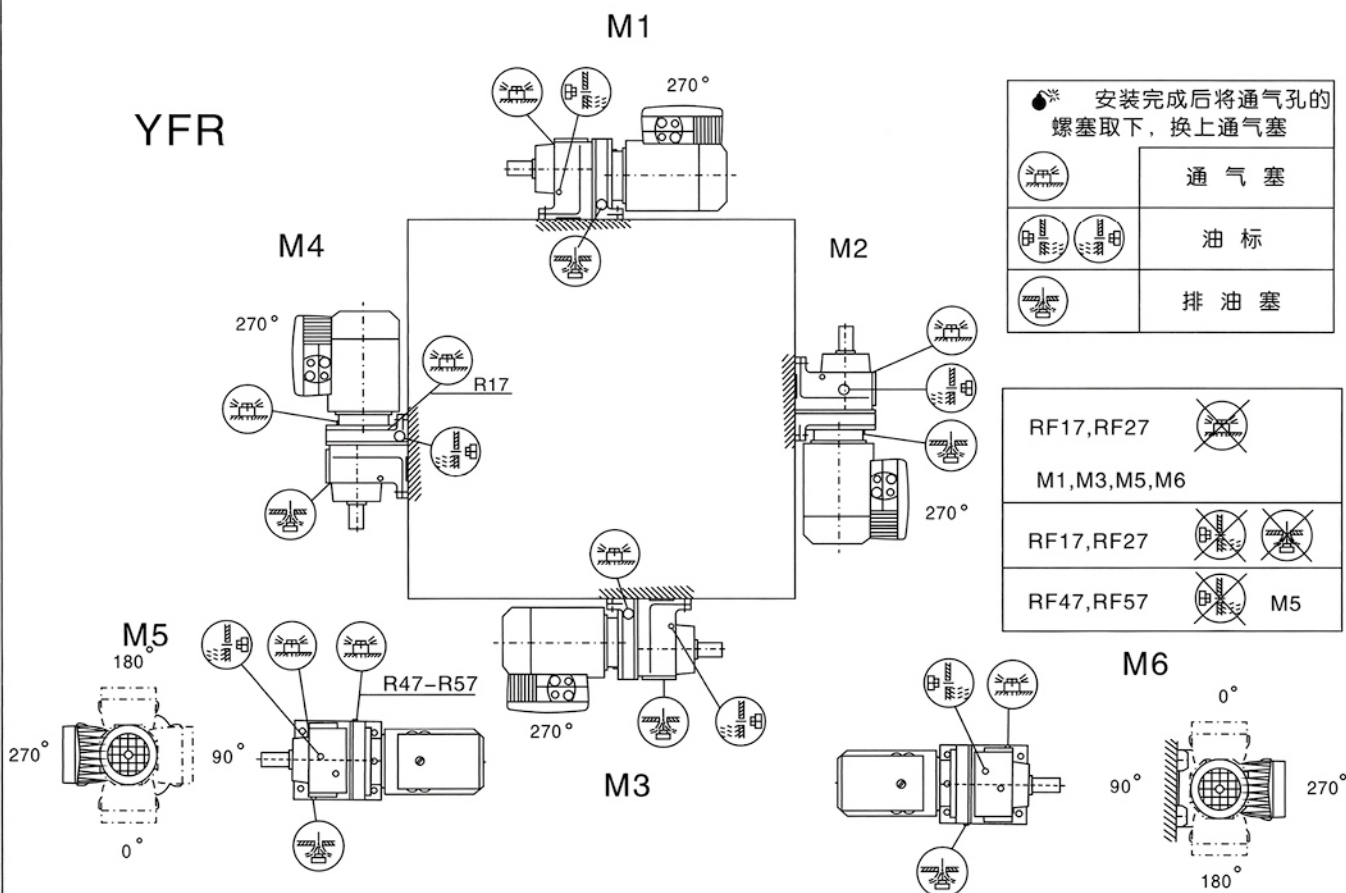
安装位置图例新旧对照

表14 Table14

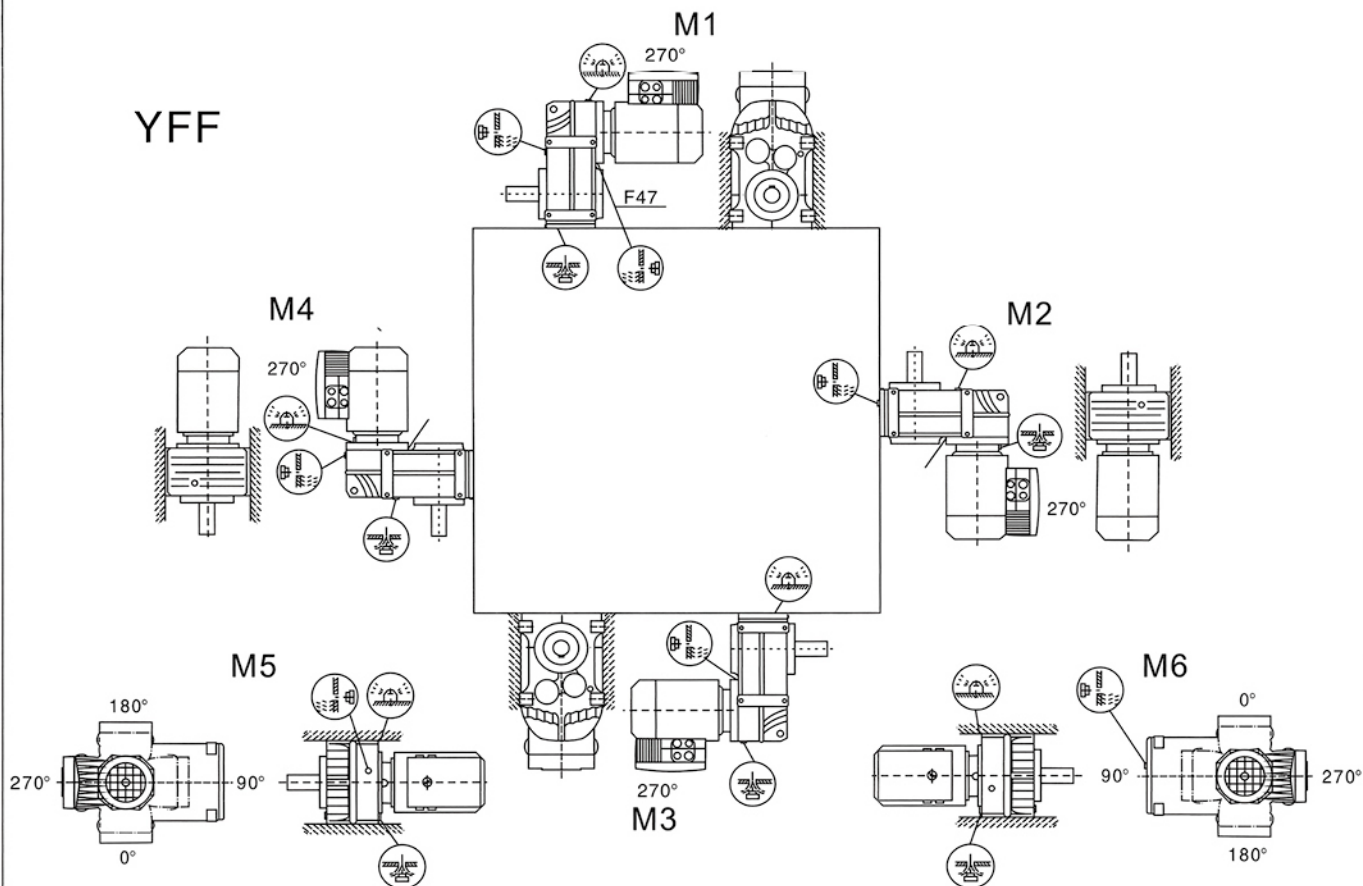
Old and new installation position position legend constrast

新编号 New NO 旧编号 Old NO	M1	M2	M3	M4	M5	M6
R	B3	V6	B8	V5	B6	B7
R..F	B35	V36	B85	V15	B65	B75
RF	B5	V3	B5II	V1	B51	B511
RX	B3	V6	B8	V5	B6	B7
RXF	B5	V3	B5II	V1	B51	B5111
F FA..B	B6	V6	B6II	V5	B3 B8	B31 B81
FF	B5	V3	B5II	V1	B51	B5111
FA FAF FAZ	H1	H6	H2	H5	H4	H3
K KA..B	B3 B61	B6 B81	B8	B31 B61	V5 V51	V6 V61
KF	B51 B3/B51	B5 B65	B5111 B8/B5111	B511 B6/B511	V1	V11 V6/V11
KA KAF KAZ	H1	H4	H2	H3	H5	H6
S	B3 B61 B811(仅用于S37)	B6 B81	B8 B311	B31 B611	V5 V51	V6 V61 V511(仅用于S37)
SF	B51	B5	B5111	B511	V1	V11
SA SAF SAZ	H1	H4	H2	H3	H5	H6

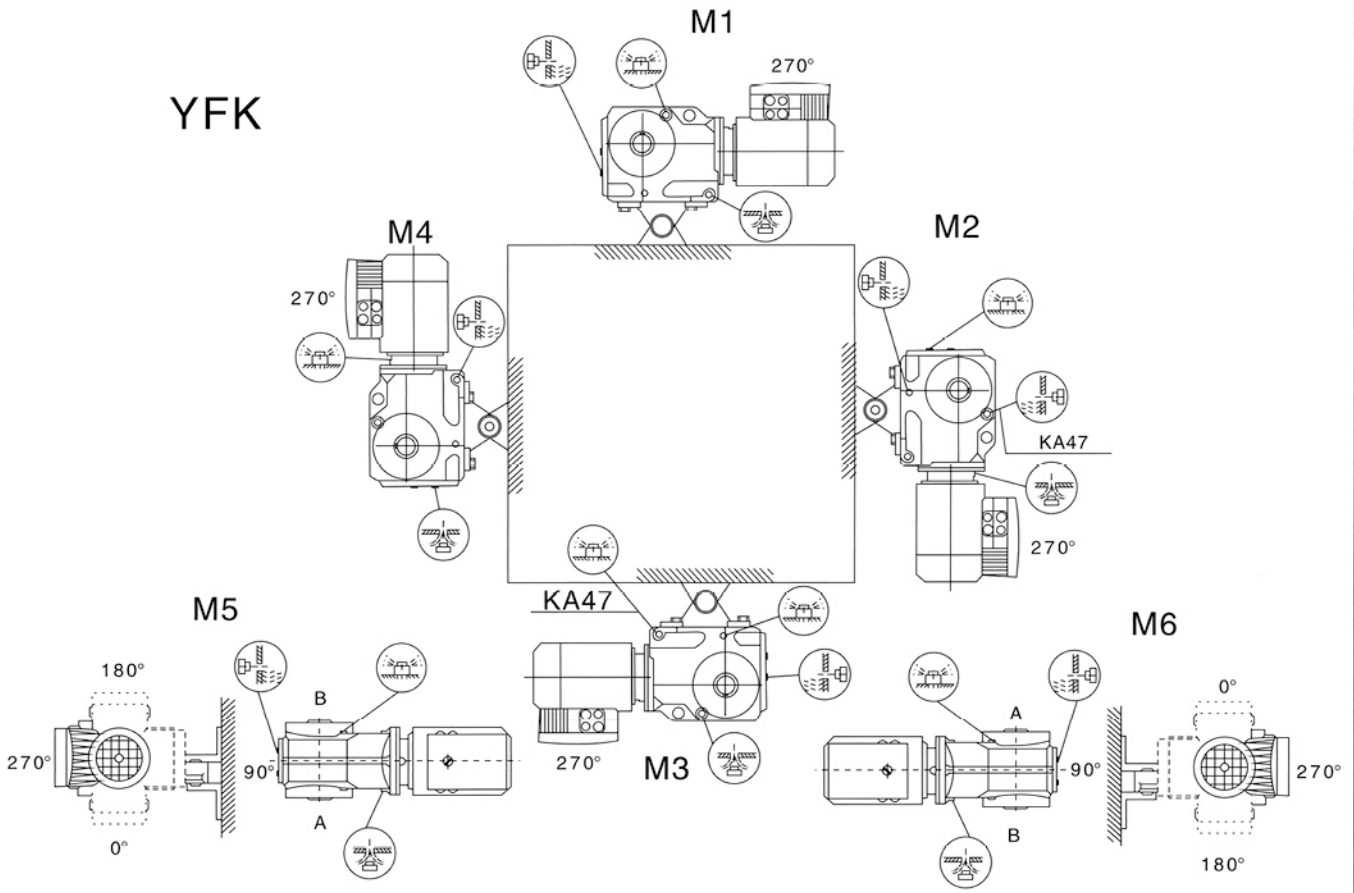
YFR



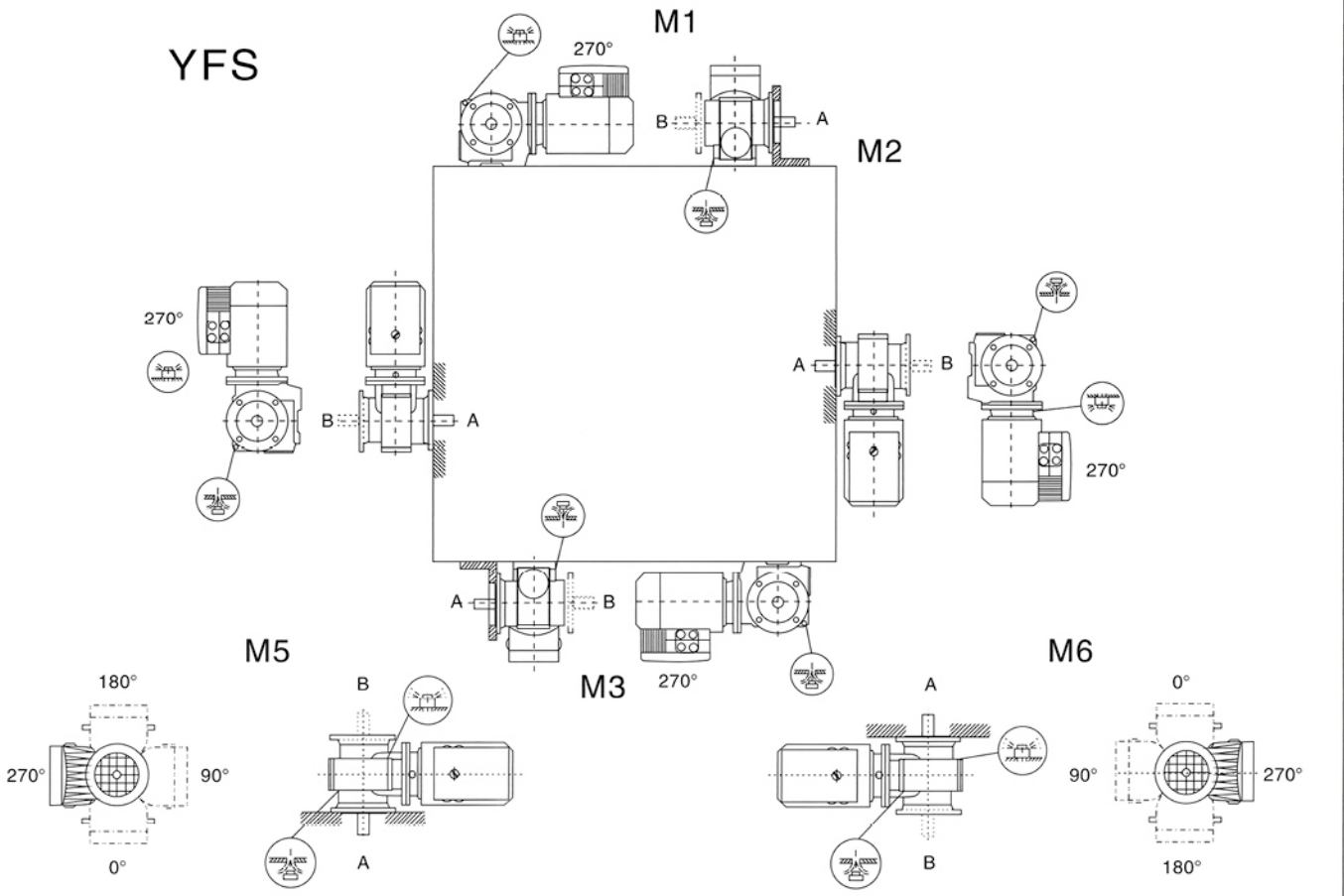
YFF



YFK



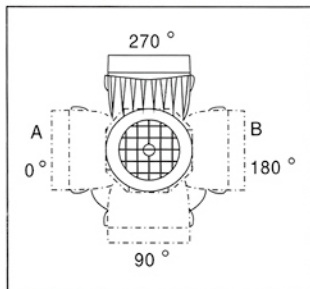
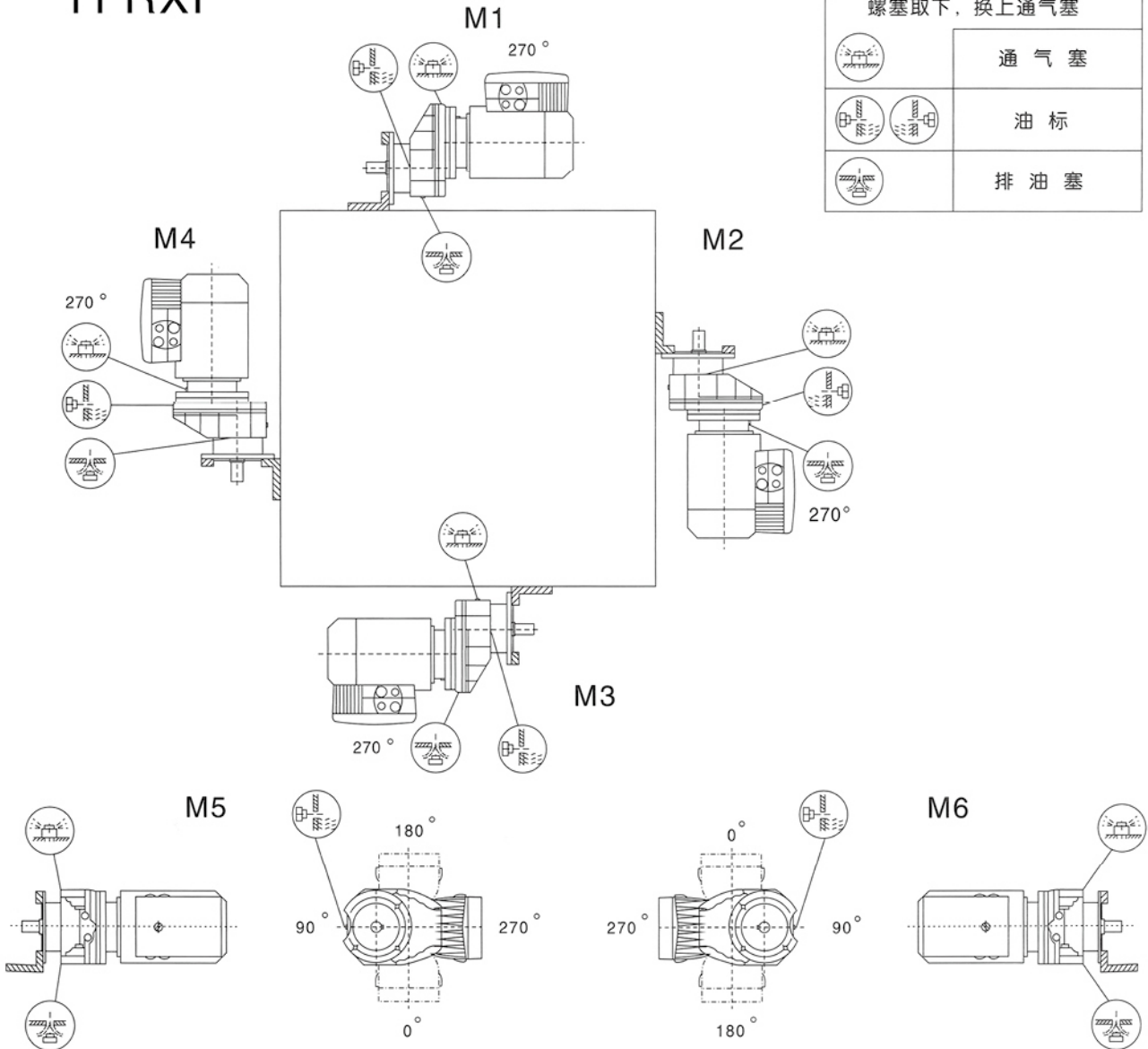
YFS



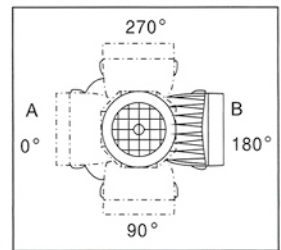
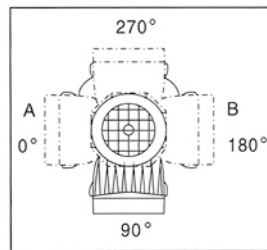
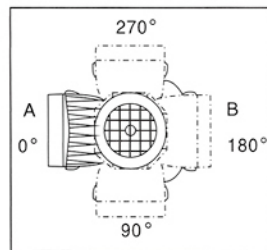
YFRXF

安装完成后将通气孔的
螺塞取下，换上通气塞

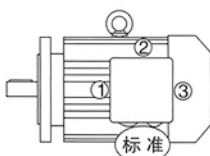
	通气塞
	油标
	排油塞



接线盒 标准安装型式



接线盒 特殊安装型式:



接线孔位置“标准”，“1”、“2”或“3”
(DR63仅用于“标准”和“2”)

YFR.YFF.YFK.YFS...AD

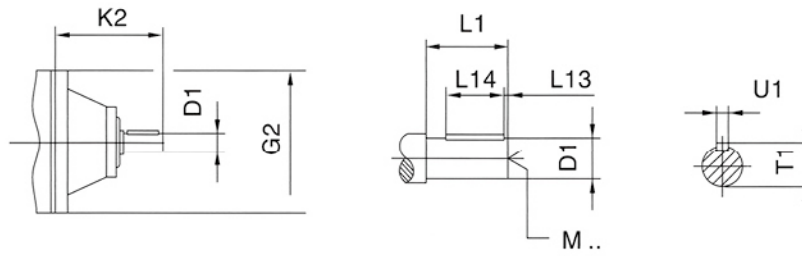


表15 Table15

		G2	K2	D1	L1	L13	L14	T1	U1	M
YFS37 YFR27 YFR37 YFS47 YFF37 YFF47 YFS57 YFK37	AD1	120	102	16	40	4	32	18	5	M5
	AD2		130	19	40	4	32	21.5	6	M6
YFR47 YFR57 YFR67 YFS67 YFF57 YFF67 YFK47 YFK57 YFK67	AD2	160	123	19	40	4	32	21.5	6	M6
	AD3		159	24	50	5	40	27	8	M8
YFS77 YFR77 YFF77 YFK77	AD2	200	116	19	40	4	32	21.5	6	M6
	AD3		151	24	50	5	40	27	8	M8
	AD4		224	38	80	5	70	41	10	M12
YFS87 YFR87 YFF87 YFK87	AD2	250	111	19	40	4	32	21.5	6	M6
	AD3		156	28	60	5	50	31	8	M10
	AD4		219	38	80	5	70	41	10	M12
	AD5		292	42	110	10	70	45	12	M16
YFS97 YFR97 YFF97 YFK97	AD3	300	151	28	60	5	50	31	8	M10
	AD4		214	38	80	5	70	41	10	M12
	AD5		287	42	110	10	70	45	12	M16
	AD6		327	48	110	10	80	51.5	14	M16
YFR107 YFF107 YFK107	AD3	350	145	28	60	5	50	31	8	M10
	AD4		208	38	80	5	70	41	10	M12
	AD5		281	42	110	10	70	45	12	M16
	AD6		321	48	110	10	80	51.5	14	M16
YFR137	AD4	400	201	38	80	5	70	41	10	M12
	AD5		274	42	110	10	70	45	12	M16
	AD6		314	48	110	10	80	51.5	14	M16
	AD7		308	55	110	10	90	59	16	M20
YFR147 YFF127 YFK127	AD4	450	193	38	80	5	70	41	10	M12
	AD5		266	42	110	10	70	45	12	M16
	AD6		306	48	110	10	80	51.5	14	M16
	AD7		300	55	110	10	90	59	16	M20
	AD8		383	70	140	15	110	74.5	20	M20
YFR167 YFF157 YFK157 YFK167 YFK187	AD5	550	258	42	110	15	70	45	12	M16
	AD6		298	48	110	10	80	51.5	14	M16
	AD7		292	55	110	10	90	59	16	M20
	AD8		374	70	140	15	110	74.5	20	M20

输出转速 output speed na r/min	输出转矩 output torque Ma N.m	传动比 Ratio i	径向载荷 Permissible overhung load outsidside Fa N	使用系数 service factor fb	机型号 Type	极数 Pole	重量 weight kg	输出转速 output speed na r/min	输出转矩 output torque Ma N.m	传动比 Ratio i	径向载荷 Permissible overhung load outsidside Fa N	使用系数 service factor fb	机型号 Type	极数 Pole	重量 weight kg
0.12kW								0.12kW							
0.08	11800	17550	79800	1.10	YFKI27R77	4	470	0.99	920	1388	18600	1.70	YFK77R37	4	69
0.09	10700	16006	80400	1.20	YFKF127R77	4	510	1.1	810	1218	19000	1.90	YFKF77R37	4	77
0.11	8010	12440	81500	1.60	YFKAI27R77	4	440	1.3	710	1053	19200	2.2	YFKA77R37	4	62
0.13	6920	10915	81800	1.90	YFKAF127R77	4	480	1.5	620	924	19500	2.5	YFKAF77R37	4	70
0.14	6320	9819	82000	2.1				1.7	550	815	19600	2.8			
0.16	5220	8443	82300	2.5				2.0	440	709	19800	3.5			
0.18	4820	7482	82300	2.7				2.2	385	622	19900	4.0			
0.10	9590	14311	65000	0.85	YFKI07R77	4	310	1.0	930	1351	9230	0.90	YFK67R37	4	45
0.11	8060	12211	65000	1.00	YFKF107R77	4	320	1.2	795	1171	10500	1.05	YFKF67R37	4	51
0.13	6930	10677	65000	1.15	YFKAI07R77	4	280	1.3	695	1034	11300	1.20	YFKA67R37	4	42
0.14	6280	9524	65000	1.25	YFKAF107R77	4	305	1.5	585	903	12000	1.40	YFKAF67R37	4	48
0.17	5410	8328	65000	1.50				1.7	545	793	12200	1.50			
0.19	4720	7270	65000	1.70				2.0	440	697	12700	1.85			
0.22	3760	6184	65000	2.1				2.2	390	613	12900	2.1			
0.24	3320	5662	65000	2.4				2.5	340	542	13000	2.4			
0.27	3020	5138	65000	2.7				2.9	315	471	13000	2.6			
0.32	2700	4359	65000	3.0				3.3	265	420	13000	3.1			
								3.8	235	361	13000	3.5			
0.17	5310	8054	39500	0.80	YFK97R57	4	180	4.3	210	323	13000	3.9			
0.20	4350	6970	40000	1.00	YFKF97R57	4	200	4.9	176	279	13000	4.7			
0.23	3890	6027	40000	1.10	YFKA97R57	4	160	5.6	155	246	13000	5.3			
0.26	3560	5391	40000	1.20	YFKAF97R57	4	185	6.3	134	217	13000	6.1			
0.30	2950	4669	40000	1.45											
0.34	2640	4082	40000	1.65				1.5	585	906	7750	1.05	YFK57R37	4	39
0.39	2320	3583	40000	1.85				1.7	525	806	8220	1.15	YFKF57R37	4	44
0.44	2040	3108	40000	2.1				2.0	445	699	8690	1.35	YFKA57R37	4	37
0.50	1720	2757	40000	2.5				2.2	390	615	8930	1.55	YFKAF57R37	4	43
0.57	1580	2419	40000	2.7				2.5	340	544	9120	1.75			
0.65	1370	2123	40000	3.2				2.9	310	473	9250	1.95			
0.74	1220	1856	40000	3.5				3.3	265	421	9420	2.3			
0.85	1000	1625	40000	4.3				3.8	235	362	9510	2.5			
0.96	860	1430	40000	5.0				4.3	210	319	9610	2.9			
1.1	830	1261	40000	5.2				4.9	176	280	9710	3.4			
1.2	725	1102	40000	5.9				5.6	155	246	9770	3.9			
								6.4	135	215	9830	4.4			
0.26	3380	5240	26300	0.80	YFK87R57	4	120	7.2	122	192	9860	4.9			
0.30	2850	4562	27100	0.95	YFKF87R57	4	130								
0.34	2610	4037	27400	1.05	YFKA87R57	4	105	2.2	430	639	2520	0.95	YFK47R37	4	33
0.38	2330	3609	27700	1.15	YFKAF87R57	4	120	2.5	370	552	6350	1.10	YFKF47R37	4	36
0.44	1990	3107	28100	1.35				2.8	315	495	6930	1.25	YFKA47R37	4	32
0.51	1700	2728	28300	1.60				3.2	280	426	7240	1.45	YFKAF47R37	4	35
0.58	1500	2371	28500	1.80				3.7	235	375	7560	1.70			
0.66	1380	2088	28600	1.95				4.2	215	327	7670	1.85			
0.74	1220	1854	28700	2.2				4.8	189	289	7830	2.1			
0.83	1090	1657	28700	2.5											
0.97	930	1415	28800	2.9				4.0	235	346	4840	0.85	YFK37R17	4	19
1.1	800	1229	28900	3.4				4.5	200	304	5640	1.00	YFKF37R17	4	21
1.3	695	1078	28900	3.9				5.2	182	267	5830	1.10	YFKA37R17	4	19
1.5	585	951	29000	4.6				5.9	157	234	6060	1.25	YFKAF37R17	4	20
1.6	505	837	29000	5.4				6.7	138	205	6220	1.45			
1.9	435	726	29000	6.2				7.6	120	181	6330	1.65			
								8.6	105	160	6420	1.90			
0.51	1790	2717	13400	0.85	YFK77R37	4	69	10	88	136	6500	2.3			
0.58	1510	2370	15700	1.05	YFKF77R37	4	78								
0.67	1380	2050	16500	1.10	YFKA77R37	4	62	6.2	184	144.79	13000	4.4	YFK67	6	34
0.78	1180	1772	17500	1.30	YFKAF77R37	4	70						YFKF67	6	40
0.91	1010	1514	18300	1.55									YFKA67	6	31
													YFKAF67	6	37

输出转速 output speed na r/min	输出转矩 output torque Ma N.m	传动比 Ratio i	径向载荷 Permissible overhung load outsidside Fa N	使用系数 service factor fb	机型号 Type	极数 Pole	重量 weight kg	输出转速 output speed na r/min	输出转矩 output torque Ma N.m	传动比 Ratio i	径向载荷 Permissible overhung load outsidside Fa N	使用系数 service factor fb	机型号 Type	极数 Pole	重量 weight kg
0.18kW								0.18kW							
3.5	400	375	5930	1.00	YFK47R37	4	33	77	22	17.15	4430	8.1	YFK37	4	16
4.0	360	327	6440	1.10	YFKF47R37	4	36	86	20	15.31	4280	8.8	YFKF37	4	18
4.6	315	289	6920	1.25	YFKA47R37	4	32	101	17	13.08	4080	9.7	YFKA37	4	16
5.2	275	256	7290	1.45	YFKAF47R37	4	35	109	16	12.14	3980	10	YFKAF37	4	17
5.9	245	225	7500	1.65				126	14	10.49	3810	12			
6.7	210	198	7710	1.90				148	12	8.91	3620	14			
7.7	183	171	7860	2.2				166	10	7.96	3490	15			
8.6	164	153	7950	2.4											
10	142	131	8040	2.8											
6.4	225	205	5300	0.90	YFK37R17	4	19	0.13	15300	9819	75300	0.85	YFKI27R77	4	470
7.3	199	181	5650	1.00	YFKF37R17	4	21	0.15	13000	8443	79200	1.00	YFKF127R77	4	510
8.2	175	160	5900	1.15	YFKA37R17	4	19	0.17	11700	7482	79900	1.10	YFKA127R77	4	440
9.7	148	136	6140	1.35	YFKAF37R17	4	20	0.20	10200	6565	80600	1.30	YFKAF127R77	4	480
10	140	127	6200	1.45				0.22	8770	5804	81200	1.50			
								0.26	7670	5027	81600	1.70			
								0.29	6680	4423	81900	1.95			
								0.33	5850	3889	82100	2.2			
								0.39	4930	3311	82300	2.6			
6.0	285	144.79	13000	2.9	YFK67	6	35	0.21	9440	6184	65000	0.85	YFKI07R77	4	310
7.0	245	123.54	13000	3.4	YFKF67	6	40	0.23	8520	5662	65000	0.95	YFKF107R77	4	320
8.1	215	108.03	13000	3.8	YFKA67	6	32	0.25	7730	5138	65000	1.05	YFKA107R77	4	285
8.5	205	102.62	13000	4.0	YFKAF67	6	38	0.30	6700	4359	65000	1.20	YFKAF107R77	4	305
9.1	189	144.79	13000	4.3	YFK67	4	34	0.34	5850	3810	65000	1.35			
11	161	123.54	13000	5.1	YFKF67	4	40	0.39	5070	3358	65000	1.60			
12	141	108.03	13000	5.8	YFKA67	4	31	0.44	4540	2977	65000	1.75			
					YFKAF67	1	37	0.50	3970	2599	65000	2.0			
6.0	285	145.14	9340	2.1	YFK57	6	29	0.57	3450	2286	65000	2.3			
7.0	245	123.85	9480	2.5	YFKF57	6	34	0.67	2930	1939	65000	2.7			
8.0	215	108.29	9590	2.8	YFFA57	6	27	0.76	2640	1713	65000	3.0			
8.5	205	102.88	9620	3.0	YFKAF57	6	32	0.84	2390	1554	65000	3.3			
9.6	178	90.26	9700	3.4				0.97	2060	1336	65000	3.9			
9.1	189	145.14	9670	3.2	YFK57	4	28	0.42	4890	3108	40000	0.90	YFK97R77	4	180
11	161	123.85	9750	3.7	YFKF57	4	33	0.47	4250	2757	40000	1.00	YFKF97R77	4	200
12	141	108.29	9810	4.3	YFKA57	4	26	0.54	3840	2419	40000	1.10	YFKA97R77	4	160
13	134	102.88	9830	4.5	YFKAF57	4	32	0.61	3340	2123	40000	1.30	YFKAF97R77	4	185
15	118	90.26	9880	5.1				0.70	2950	1856	40000	1.45			
17	100	76.56	9920	6.0				0.80	2520	1625	40000	1.70			
								0.91	2190	1430	40000	1.95			
6.6	260	131.87	7380	1.55	YFK47	6	23	1.0	2010	1261	40000	2.1			
7.2	240	121.48	7530	1.65	YFKF47	6	26	1.2	1750	1102	40000	2.5			
8.3	205	104.37	7740	1.95	YFKA47	6	22	1.4	1520	957	40000	2.8			
9.6	180	90.86	7880	2.2	YFKAF47	6	25	1.5	1360	855	40000	3.2			
10	168	85.12	7930	2.4											
10	172	131.87	7910	2.3	YFK47	4	22	0.62	3320	2088	26400	0.80	YFK87R57	4	120
11	158	121.48	7970	2.5	YFKF47	4	26	0.70	2950	1854	27000	0.90	YFKF87R57	4	125
13	136	104.37	8060	2.9	YFKA47	4	22	0.78	2640	1657	27400	1.00	YFKA87R57	4	105
15	118	90.86	8120	3.4	YFKAF47	4	24	0.92	2250	1415	27800	1.20	YFKAF87R57	4	120
16	111	85.12	8140	3.6				1.1	1950	1229	28100	1.40			
								1.2	1700	1078	28300	1.60			
								1.4	1470	951	28500	1.85			
8.2	210	106.38	5520	0.95	YFK37	6	17	1.5	1280	837	28600	2.1			
8.9	193	97.81	5710	1.05	YFKF37	6	19	1.8	1110	726	28700	2.4			
10	165	83.69	5990	1.20	YFKA37	6	16	2.0	990	638	28800	2.7			
12	143	72.54	6170	1.40	YFKAF37	6	18								
12	139	106.38	6210	1.45	YFK37	4	16	1.2	1690	1053	14300	0.90	YFK77R37	4	70
14	127	97.81	6280	1.55	YFKF37	4	18	1.4	1480	924	15800	1.05	YFKF77R37	4	78
16	109	83.69	6400	1.85	YFKA37	4	16	1.6	1310	815	16900	1.20	YFKA77R37	4	62
18	95	72.54	6470	2.1	YFKAF37	4	17	1.8	1100	709	17900	1.40	YFKAF77R37	4	70
19	88	67.80	6500	2.3				2.1	960	622	18400	1.60			
23	76	58.60	6280	2.6				2.3	860	552	18800	1.80			
27	65	49.79	6010	3.1				2.7	755	485	19100	2.0			
30	58	44.46	5830	3.5				3.0	665	428	19300	2.3			
35	49	37.97	5580	4.1				3.5	580	367	19500	2.7			
37	46	35.57	5480	4.3				4.0	515	328	19700	3.0			
44	39	29.96	5220	5.1				4.5	460	290	19800	3.4			
46	38	28.83	5160	5.3				5.2	395	252	19900	3.9			
53	33	24.99	4950	6.2				5.9	345	221	19900	4.5			
57	30	23.36	4850	6.4				6.7	305	195	20000	5.1			
65	26	20.19	4650	7.0				7.4	270	175	20000	5.7			

输出转速 output speed na r/min	输出转矩 output torque Ma N.m	传动比 Ratio i	径向载荷 Permissible overhung load outputside Fa N	使用系数 service factor fb	机型号 Type	极数 Pole	重量 weight kg	输出转速 output speed na r/min	输出转矩 output torque Ma N.m	传动比 Ratio i	径向载荷 Permissible overhung load outputside Fa N	使用系数 service factor fb	机型号 Type	极数 Pole	重量 weight kg
0.25kW								0.25kW							
2.1	960	613	7350	0.85	YFK67R37	4	46	9.9	240	131.87	7510	1.65	YFK47	4	23
2.4	850	542	10100	0.95	YFKF67R37	4	51	11	225	121.48	7640	1.80	YFKF47	4	26
2.8	755	471	10900	1.10	YFKA67R37	4	43	12	192	104.37	7820	2.1	YFKA47	4	22
3.1	655	420	11600	1.25	YFKAF67R37	4	49	14	167	90.86	7930	2.4	YFKAF47	4	25
3.6	575	361	12000	1.45				15	156	85.12	7980	2.6			
4.0	510	323	12400	1.60											
4.7	435	279	12700	1.90				11	225	83.69	5300	0.90	YFK37	6	18
5.3	385	246	12900	2.1				12	197	72.54	5680	1.00	YFKF37	6	20
6.0	335	217	13000	2.4				13	184	67.80	5810	1.10	YFKA37	6	17
								15	159	58.60	6050	1.25	YFKAF37	6	19
								18	135	49.79	6230	1.50			
3.1	655	421	5750	0.90	YFK57R37	4	40	12	195	106.38	5690	1.00	YFK37	4	17
3.6	575	362	7840	1.05	YFKF57R37	4	45	13	180	97.81	5860	1.10	YFKF37	4	19
4.1	505	319	8380	1.20	YFKA57R37	4	38	16	154	83.69	6090	1.30	YFKA37	4	16
4.7	435	280	8720	1.35	YFKAF57R37	4	43	18	133	72.54	6250	1.50	YFKAF37	4	18
5.3	385	246	8950	1.55				19	125	67.80	6230	1.60			
6.1	335	215	9150	1.80				22	108	58.60	6030	1.85			
6.8	300	192	9280	2.0				26	91	49.79	5810	2.2			
7.8	260	166	9430	2.3				29	82	44.46	5650	2.5			
9.0	225	145	9550	2.7				34	70	37.97	5430	2.9			
10	205	129	9620	2.9				37	65	35.57	5340	3.1			
12	173	111	9720	3.5				43	55	29.96	5100	3.6			
13	152	97	9780	4.0				45	53	28.83	5050	3.8			
4.4	540	154.02	19600	2.9	YFK77	8	65	52	46	24.99	4860	4.4			
5.0	475	135.28	19700	3.3	YFKF77	8	73	56	43	23.36	4770	4.6			
5.3	450	128.52	19800	3.4	YFKA77	8	58	64	37	20.19	4580	5.0			
6.0	400	113.56	19900	3.9	YFKAF77	8	65	76	32	17.15	4370	5.7			
4.6	520	192.18	19700	2.8	YFK77	6	61	85	28	15.31	4230	6.2			
4.9	485	179.37	19700	3.0	YFKF77	6	69	99	24	13.08	4030	6.9			
5.7	420	154.02	19800	3.7	YFKA77	6	54	107	22	12.14	3940	7.2			
6.5	365	135.28	19900	4.2	YFKAF77	6	61	124	19	10.49	3780	8.3			
5.5	435	123.54	12700	1.90	YFK67	8	39	146	16	8.91	3590	9.8			
6.3	380	108.03	12900	2.2	YFKF67	8	45	163	15	7.96	3470	11			
6.6	360	102.62	12900	2.3	YFKA67	8	37	191	13	6.80	3310	12			
7.6	315	90.04	13000	2.6	YFKAF67	8	42	204	12	6.37	3240	12			
6.1	395	144.79	12800	2.1	YFK67	6	36	0.18	16600	7482	72600	0.80	YFKI27R77	4	470
7.1	335	123.54	13000	2.5	YFKF67	6	42	0.21	14500	6565	76900	0.90	YFKFI27R77	4	510
8.1	295	108.03	13000	2.8	YFKA67	6	34	0.24	12600	5804	79400	1.05	YFKAI27R77	4	445
8.6	280	102.62	13000	3.0	YFKAF67	6	39	0.27	11000	5027	80200	1.20	YFKAFI27R77	4	480
9.0	265	144.79	13000	3.1	YFK67	4	35	0.31	9610	4423	80800	1.35			
11	225	123.54	13000	3.6	YFKF67	4	40	0.35	8430	3889	81300	1.55			
12	198	108.03	13000	4.1	YFKA67	4	32	0.42	7120	3311	81700	1.85			
13	189	102.62	13000	4.3	YFKAF67	4	38	0.72	4230	1926	82500	3.1			
6.1	395	145.14	8910	1.50	YFK57	6	30	0.79	3860	1757	82500	3.4			
7.1	335	123.85	9150	1.80	YFKF57	6	35	0.90	3360	1541	82600	3.9			
8.1	295	108.29	9310	2.0	YFKA57	6	28	0.36	8380	3810	65000	0.95	YFKI07R77	4	310
8.6	280	102.88	9360	2.2	YFKAF57	6	34	0.41	7300	3358	65000	1.10	YFKFI07R77	4	325
9.8	245	90.26	9480	2.5				0.46	6510	2977	65000	1.25	YFKA107R77	4	285
11	210	76.56	9610	2.9				0.53	5690	2599	65000	1.40	YFKAF107R77	4	305
9.0	265	145.14	9410	2.2	YFK57	4	29	0.60	4970	2286	65000	1.60			
11	225	123.85	9540	2.6	YFKF57	4	34	0.71	4210	1939	65000	1.90			
12	199	108.29	9640	3.0	YFKA57	4	27	0.81	3790	1713	65000	2.1			
13	189	102.88	9670	3.2	YFLAF57	4	32	0.89	3440	1554	65000	2.3			
14	166	90.26	9740	3.6				1.0	2950	1336	65000	2.7			
17	141	76.56	9810	4.3				1.2	2580	1166	65000	3.1			
6.7	360	131.87	6470	1.10	YFK47	6	25	0.65	4770	2123	40000	0.90	YFK97R57	4	180
7.2	330	121.48	6780	1.20	YFKF47	6	28	0.74	4200	1856	40000	1.00	YFKF97R57	4	200
8.4	285	104.37	7210	1.40	YFKA47	6	24	0.85	3610	1625	40000	1.20	YFKA97R57	4	160
9.7	245	90.86	7480	1.60	YFKAF47	6	27	0.96	3160	1430	40000	1.35	YFKAF97R57	4	185
10	230	85.12	7590	1.75				1.1	2850	1261	40000	1.50			
								1.2	2490	1102	40000	1.70			
								1.4	2160	957	40000	2.0			
								1.6	1930	855	40000	2.2			
								1.9	1620	743	40000	2.7			
								2.1	1430	652	40000	3.0			
								2.4	1280	573	40000	3.4			

输出转速 output speed na r/min	输出转矩 output torque Ma N.m	传动比 Ratio i	径向载荷 Permissible overhung load outputside Fa N	使用系数 service factor fb	机型号 Type	极数 Pole	重量 weight kg	输出转速 output speed na r/min	输出转矩 output torque Ma N.m	传动比 Ratio i	径向载荷 Permissible overhung load outputside Fa N	使用系数 service factor fb	机型号 Type	极数 Pole	重量 weight kg
0.55kW								0.75kW							
21	245	63.30	7500	1.65	YFK47	4	27	1.2	5180	1102	39700	0.85	YFK97R57	4	185
24	220	56.83	7660	1.80	YFKF47	4	30	1.4	4490	957	40000	0.95	YFKF97R57	4	205
28	189	48.95	7830	2.1	YFKA47	4	26	1.6	4020	855	40000	1.05	YFKA97R57	4	165
30	178	46.03	7880	2.2	YFKAF47	4	29	1.9	3430	743	40000	1.25	YFKAF97R57	4	190
								2.1	3020	652	40000	1.40			
23	225	58.60	4850	0.90	YFK37	4	20	2.4	2680	573	40000	1.60			
27	192	49.79	4790	1.05	YFKF37	4	22	2.7	2320	504	40000	1.85			
31	172	44.46	4740	1.15	YFKA37	4	19	3.2	2010	437	40000	2.1			
36	147	37.97	4640	1.35	YFKAF37	4	21	3.6	1770	382	40000	2.4			
38	137	35.57	4600	1.45				4.5	1420	305	40000	3.0			
45	116	29.96	4470	1.75				5.4	1190	258	40000	3.6			
47	111	28.83	4440	1.80				5.9	1080	232	40000	4.0			
54	97	24.99	4320	2.1				6.9	920	199	40000	4.7			
58	90	23.36	4260	2.2											
67	78	20.19	4130	2.4				1.9	3370	726	26300	0.80	YFK97R57	4	125
79	66	17.15	3980	2.7				2.2	2970	638	26900	0.90	YFKF97R57	4	130
89	59	15.31	3880	3.0				2.5	2610	562	27400	1.05	YFKA97R57	4	110
104	51	13.08	3730	3.3				2.9	2200	474	27900	1.25	YFKAF97R57	4	125
112	47	12.14	3660	3.4				3.2	1980	426	28100	1.35			
130	41	10.49	3520	4.0				3.7	1720	373	28300	1.55			
153	34	8.91	3370	4.7				4.2	1520	330	28500	1.80			
171	31	7.96	3270	5.1				4.7	1350	294	28600	2.0			
200	26	6.80	3130	5.7				5.5	1160	250	28700	2.3			
214	25	6.37	3070	5.9				5.8	1100	236	28700	2.5			
254	21	5.36	2920	6.8				6.9	930	201	28800	2.9			
0.75kW															
0.11	58400	13116	175300	0.85	YFKI87R97	4	1770	3.8	1720	367	14000	0.90	YFK77R37	4	74
0.12	51500	11647	187300	0.95	YFKAI87R97	4	1770	4.2	1540	328	15500	1.00	YFKF77R37	4	82
0.19	32800	7343	190000	1.50				4.8	1360	290	16600	1.15	YFKA77R37	4	66
0.20	30000	6747	190000	1.65				5.5	1180	252	17500	1.30	YFKAF77R37	4	74
0.23	26500	5991	190000	1.90				6.2	1030	221	18200	1.50			
0.16	38600	8628	150000	0.85	YFKI67R97	4	1180	3.9	1830	176.05	40000	2.3	YFK97	8	175
0.21	29300	6562	150000	1.10	YFKAI67R97	4	1180	4.5	1590	153.21	40000	2.7	YFKF97	8	195
0.26	23700	5355	150000	1.35				4.9	1460	140.28	40000	3.0	YFKA97	8	155
0.34	18200	4079	150000	1.75									YFKAF97	8	180
0.41	15100	3376	150000	2.1				4.7	1530	147.32	28500	1.75	YFK87	8	115
0.35	17800	3979	112300	1.00	YFFI57R97	4	790	5.4	1320	126.91	28600	2.0	YFKI87	8	125
0.45	13600	3051	114100	1.30	YFKFI57R97	4	870	6.0	1200	115.82	28700	2.2	YFKA87	8	100
0.83	7440	1659	115900	2.4	YFKA157R97	4	750	6.7	1070	102.71	28700	2.5	YFKAF87	8	115
1.0	6040	1365	116200	3.0	YFKAF157R97	4	810	5.2	1390	174.19	28600	1.95	YFK87	6	105
0.42	15100	3311	75800	0.85	YFKI27R77	4	475	5.5	1310	164.34	28600	2.1	YFKI87	6	115
0.46	13700	3009	78600	0.95	YFKFI27R77	4	520	6.1	1170	147.32	28700	2.3	YFKA87	6	93
0.53	11800	2607	79800	1.10	YFKAI27R77	4	445	7.1	1010	126.91	28800	2.7	YFKAF87	6	105
0.72	8930	1926	81100	1.45	YFKAF127R77	4	485	7.0	1020	197.37	28800	2.6	YFK87	4	100
0.79	8150	1757	81400	1.60				7.9	900	174.19	28800	3.0	YFKI87	4	110
0.90	7120	1541	81700	1.85				8.4	850	164.34	28900	3.2	YFKA87	4	88
1.0	6220	1342	82000	2.1				9.4	765	147.32	28900	3.5	YFKAF87	4	100
1.2	5440	1177	82200	2.4				6.7	1080	135.28	18000	1.45	YFK77	6	70
1.4	4750	1025	82400	2.7				7.0	1020	128.52	18200	1.50	YFKF77	6	78
1.5	4150	899	82500	3.1				7.9	900	113.56	18700	1.70	YFKA77	6	63
0.81	7960	1713	65000	1.00	YFKI07R77	4	315	9.3	770	97.05	19100	2.0	YFKAF77	6	70
0.89	7230	1554	65000	1.10	YFKFI07R77	4	325	10	710	88.97	19200	2.2			
1.0	6210	1336	65000	1.30	YFKAI07R77	4	285	9.0	800	154.02	19000	1.95	YFK77	4	65
1.2	5420	1166	65000	1.50	YFKAF107R77	4	310	10	700	135.28	19300	2.2	YFKF77	4	73
1.3	4710	1030	65000	1.70				11	665	128.52	19300	2.3	YFKA77	4	58
1.5	4120	904	65000	1.95				12	590	113.56	19500	2.6	YFKAF77	4	65
1.7	3680	793	65000	2.2				14	505	97.05	19700	3.1			
2.0	3210	696	65000	2.5				11	640	123.54	11700	1.30	YFK67	4	39
2.2	2800	615	65000	2.8				13	560	108.03	12100	1.45	YFKF67	4	45
								15	465	90.04	12600	1.75	YFKA67	4	37
								18	395	76.37	12800	2.1	YFKAF67	4	42
								20	360	68.95	13000	2.3			
								23	315	60.66	13000	2.6			
								24	295	57.28	13000	2.8			

输出转速 output speed na r/min	输出转矩 output torque Ma N.m	传动比 Ratio i	径向载荷 Permissible overhung load outputside Fa N	使用系数 service factor fb	机型号 Type	极数 Pole	重量 weight kg	输出转速 output speed na r/min	输出转矩 output torque Ma N.m	传动比 Ratio i	径向载荷 Permissible overhung load outputside Fa N	使用系数 service factor fb	机型号 Type	极数 Pole	重量 weight kg
1.1kW								1.5kW							
10	1020	135.28	18300	1.55	YFK77	4	70	0.21	60700	6747	171100	0.80	YFK187R97	4	1770
11	960	128.52	18400	1.60	YFKF77	4	78	0.24	53700	5991	183600	0.95			
12	850	113.56	18800	1.80	YFKA77	4	63	0.26	47900	5358	190000	1.05	YFKA187R97	4	1770
14	730	97.05	19200	2.1	YFKAF77	4	70	0.29	42900	4817	190000	1.15			
16	670	88.97	19300	2.3				0.32	38900	4370	190000	1.30			
48	585	78.07	19500	2.7				0.39	33000	3609	190000	1.50			
19	555	73.99	19600	2.8				0.46	27800	3062	190000	1.80			
								0.56	22800	2519	190000	2.2			
13	810	108.03	10400	1.00	YFK67	4	44	0.62	20400	2268	190000	2.5			
14	770	102.62	10700	1.05	YFKF67	4	50								
16	675	90.04	11400	1.20	YFKA67	4	42								
18	575	76.37	12000	1.45	YFKAF67	4	47	0.35	36700	4079	150000	0.85	YFK167R97	4	1190
20	515	68.95	12300	1.60				0.42	30400	3376	150000	1.05			
23	455	60.66	12600	1.80				0.51	24700	2755	150000	1.30	YFKA167R97	4	1190
24	430	57.28	12700	1.90				0.65	19900	2182	150000	1.60			
29	365	48.77	12900	2.2				0.83	15500	1704	150000	2.1			
32	335	44.32	13000	2.5				1.0	12800	1408	150000	2.5			
36	290	38.39	13000	2.8				1.1	11800	1296	150000	2.7			
16	675	90.26	2410	0.90	YFK57	4	38	0.61	20700	2322	110700	0.85	YFK157R97	4	800
18	575	76.56	7840	1.05	YFKF57	4	43	0.85	15100	1659	113500	1.20	YFKF157R97	4	880
20	520	69.12	8280	1.15	YFKA57	4	36	1.0	12300	1365	114600	1.45	YFKA157R97	4	760
23	455	60.81	8630	1.30	YFKAF57	4	42	1.1	11100	1229	115000	1.65	YFKAF157R97	4	820
24	430	57.42	8750	1.40				1.3	9840	1093	115300	1.85			
29	365	48.89	9020	1.65				1.5	8480	942	115700	2.1			
32	335	44.43	9160	1.80				1.6	7650	854	115900	2.3			
36	290	38.49	9330	2.1				2.5	5050	567	116300	3.6			
39	270	35.70	9400	2.2				2.8	4490	504	116400	4.0			
46	2250	30.28	9540	2.6											
51	205	27.34	9510	2.9				2.6	4820	536	82300	2.7	YFK127R87	4	500
58	181	24.05	9220	3.3				3.4	3770	418	82500	3.5	YFKF127R87	4	540
62	170	22.71	9090	3.5				3.8	3330	367	82600	3.9	YFKA127R87	4	470
72	145	19.34	8720	4.0									YFKAF127R87	4	510
80	132	17.57	8510	4.2				0.80	16200	1757	73400	0.80	YFK127R77	4	480
92	114	15.22	8180	4.7				0.91	14200	1541	77500	0.90	YFKF127R77	4	520
106	99	13.25	7880	5.1				1.0	12400	1342	79500	1.05	YFKA127R77	4	450
117	90	11.92	7570	4.6				1.2	10900	1177	80300	1.20	YFKAF127R77	4	490
124	85	11.26	7450	4.9				1.4	9470	1025	80900	1.35			
146	72	9.59	7120	5.6				1.6	8300	899	81400	1.55			
161	65	8.71	6930	6.0				1.8	7210	790	81700	1.80			
186	57	7.55	6650	6.4				2.0	6480	704	81900	2.0			
213	49	6.57	6380	7.0				2.3	5590	610	82200	2.3			
								2.6	5040	549	82300	2.6			
25	425	56.83	3310	0.95	YFK47	4	33	3.0	4360	477	82400	3.0			
29	365	48.95	6360	1.10	YFKF47	4	36	3.4	3840	418	82500	3.4			
30	345	46.03	6610	1.15	YFKA47	4	32								
35	295	39.61	7090	1.35	YFKAF47	4	35	1.4	9460	1030	65000	0.85	YFK107R77	4	320
40	265	35.39	7090	1.50				1.6	8280	904	65000	0.95	YFKF107R77	4	330
45	235	31.30	6960	1.70				1.8	7330	793	65000	1.10	YFKA107R77	4	290
48	220	29.32	6890	1.80				2.0	6420	696	65000	1.25	YFKAF107R77	4	315
54	194	25.91	6730	2.1				2.3	5640	615	65000	1.40			
64	164	21.81	6510	2.4				2.7	4780	522	65000	1.65			
72	147	19.58	6360	2.7				3.1	4210	461	65000	1.90			
								3.5	3720	408	65000	2.2			
47	225	29.96	3420	0.90	YFK37	4	26	3.9	3350	364	65000	2.4			
56	188	24.99	3440	1.05	YFKF37	4	28	4.4	2920	318	65000	2.7			
60	175	23.36	3440	1.10	YFKA37	4	26								
69	152	20.19	3420	1.20	YFKAF37	4	27	2.5	5320	573	39500	0.80	YFK97R57	4	190
82	129	17.15	3370	1.40				2.8	4650	504	40000	0.95	YFKF97R57	4	210
91	115	15.31	3330	1.50				3.2	4020	437	40000	1.05	YFKA97R57	4	170
107	98	13.08	3260	1.70				3.7	3540	382	40000	1.20	YFKAF97R57	4	195
115	91	12.14	3220	1.75				4.1	3140	342	40000	1.35			
133	79	10.49	3140	2.0				4.6	2820	305	40000	1.50			
157	67	8.91	3040	2.4				5.5	2380	258	40000	1.80			
176	60	7.96	2970	2.6				6.1	2140	232	40000	2.0			
206	51	6.80	2870	2.9				7.1	1840	199	40000	2.3			
220	48	6.37	2830	3.0											
261	40	5.36	2720	3.5											

输出转速 output speed na r/min	输出转矩 output torque Ma N.m	传动比 Ratio i	径向载荷 Permissible overhung load outside Fa N	使用系数 service factor fb	机型号 Type	极数 Pole	重量 weight kg	输出转速 output speed na r/min	输出转矩 output torque Ma N.m	传动比 Ratio i	径向载荷 Permissible overhung load outside Fa N	使用系数 service factor fb	机型号 Type	极数 Pole	重量 weight kg
7.5kW								7.5kW							
4.4	16400	164.50	150000	1.95	YFKI67	8	1160	25	2830	56.55	37100	1.50	YFK97	4	210
5.3	13400	134.99	150000	2.4	YFKA167	8	1160	30	2400	47.93	36400	1.80	YFKF97	4	230
								34	2100	41.87	35600	2.0	YFKA97	4	190
								37	1920	39.30	35100	2.2	YFKAF97	4	215
5.8	12300	164.50	150000	2.6	YFKI67	6	1130	42	1710	34.23	34400	2.5			
7.1	10100	134.99	150000	3.2	YFKA167	6	1130	23	3160	63.00	24100	0.85	YFK87	4	150
								25	2840	56.64	24200	0.95	YFKF87	4	160
								29	2460	49.16	24200	1.10	YFKA87	4	140
6.4	11200	150.41	114900	1.60	YFKI57	6	730	32	2200	44.02	24200	1.20	YFKAF87	4	155
7.8	9130	122.39	115500	1.95	YFKFI57	6	810	39	1830	36.52	23900	1.35			
9.6	7480	100.22	115900	2.4	YFKAI57	6	700	46	1570	31.39	23500	1.70			
10	6840	91.65	116000	2.6	YFKAFI57	6	760	51	1400	27.88	23200	1.85			
12	5950	79.75	116200	3.0				57	1250	24.92	22800	2.0			
								64	1120	22.41	22500	2.0			
								74	970	19.45	21900	2.4			
7.1	10200	136.14	80600	1.30	YFKI27	6	495	82	870	17.42	21500	2.5			
7.8	9140	122.48	81000	1.40	YFKFI27	6	540	89	800	16.00	20600	2.2			
8.7	8220	110.18	81400	1.60	YFKA127	6	465	99	725	14.45	20700	2.9			
11	6710	89.89	81900	1.95	YFKAFI27	6	500								
								46	1550	30.89	15400	1.00	YFK77	4	115
9.8	7320	146.07	81700	1.80	YFKI27	4	480	49	1470	29.27	16000	1.05	YFKF77	4	125
11	6820	136.14	81800	1.90	YFKFI27	4	520	56	1280	25.62	17000	1.20	YFKA77	4	110
12	6130	122.48	82000	2.1	YFKA127	4	450	62	1160	23.08	17700	1.35	YFKAF77	4	115
13	5520	110.18	82200	2.4	YFKAFI27	4	490	71	1010	20.25	18300	1.50			
16	4500	89.89	82400	2.9				80	890	17.87	18600	1.60			
17	4110	81.98	82500	3.2				90	795	15.84	18200	1.60			
20	3550	70.95	82600	3.7				106	675	13.52	17800	1.75			
								116	620	12.36	17000	1.80			
								132	545	10.84	16700	1.90			
10	7190	143.47	65000	1.10	YFKI07	4	325	150	480	9.56	16300	2.0			
12	6080	121.46	65000	1.30	YFKFI07	4	335	169	425	8.48	15900	2.1			
13	5630	112.41	65000	1.40	YFKA107	4	295	198	365	7.24	15400	2.3			
14	5050	100.75	65000	1.60	YFKAFI07	4	320								
16	4560	90.96	64200	1.75				11kW							
17	4140	82.61	63200	1.95				1.7	55900	835	179700	0.90	YFK187R107	4	1870
20	3670	73.30	61900	2.2				2.0	48800	729	190000	1.05			
22	3330	66.52	60900	2.4				2.3	41600	622	190000	1.20	YFKA187R107	4	1870
25	2860	57.17	59100	2.8				2.8	34800	520	190000	1.45			
29	2500	49.90	57500	3.1				3.2	30400	454	190000	1.65			
34	2120	42.33	55500	3.5				4.1	23800	335	190000	2.1			
39	1850	37.00	53800	3.9											
								2.0	49600	738	190000	1.00	YFK187R97	4	1830
								2.3	41700	621	190000	1.20			
								2.7	35300	527	190000	1.40	YFKA187R97	4	1830
15	4850	96.80	38300	0.90	YFK97	4	210								
17	4330	86.52	38300	1.00	YFKF97	4	230	4.5	21300	318	150000	1.50	YFK167R107	4	1290
18	3900	77.89	38100	1.10	YFKA97	4	190	5.2	18600	278	150000	1.70			
20	3530	70.54	37900	1.20	YFKAF97	4	215	5.9	16300	244	150000	1.95	YFKA167R107	4	1290
23	3130	62.55	37500	1.35				6.8	14200	213	150000	2.2			
								7.0	13700	206	150000	2.3			

输出转速 output speed na r/min	输出转矩 output torque Ma N.m	传动比 Ratio i	径向载荷 Permissible overhung load outputside Fa N	使用系数 service factor fb	机型号 Type	极数 Pole	重量 weight kg	输出转速 output speed na r/min	输出转矩 output torque Ma N.m	传动比 Ratio i	径向载荷 Permissible overhung load outputside Fa N	使用系数 service factor fb	机型号 Type	极数 Pole	重量 weight kg
15kW								18.5kW							
11	13400	136.14	79000	0.95	YFKI27	4	530	8.1	21700	179.86	190000	2.3	YFKI87	4	1970
12	12000	122.48	79700	1.10	YFKFI27	4	570	8.9	19900	165.21	190000	2.5			
13	10800	110.18	80300	1.20	YFKAI27	4	500	10	17400	144.59	190000	2.9	YFKAI87	4	1970
16	8820	89.89	81200	1.45	YFKAFI27	4	540	11	15600	129.69	190000	3.2			
18	8040	81.98	81400	1.60											
21	6960	70.95	81600	1.85				11	16300	134.99	150000	1.95	YFKI67	4	1210
23	6140	62.60	80000	2.1				13	13200	109.83	150000	2.4			
27	5300	54.07	78000	2.5				17	10600	87.86	150000	3.0	YFKAI67	4	1210
31	4690	47.82	76200	2.8											
16	8920	90.96	50900	0.90	YFKI07	4	380	9.7	18300	100.22	112100	1.00	YFKI57	6	870
18	8110	82.16	51100	1.00	YFKFI07	4	390	11	16700	91.65	112800	1.10	YFKFI57	6	950
20	7190	73.30	51200	1.10	YFKAI07	4	350	12	14500	79.75	111500	1.25	YFKAI57	6	830
22	6530	66.52	51000	1.25	YFKAFI07	4	375	14	12800	70.38	109900	1.40	YFKAFI57	6	890
26	5610	57.17	50600	1.45				12	14800	122.39	111600	1.20	YFKI57	4	820
29	4900	49.90	50000	1.60				15	12100	100.22	109100	1.50	YFKFI57	4	900
34	4150	42.33	49100	1.75				16	11100	91.65	107800	1.65	YFKAI57	4	780
39	3630	37.00	48200	2.0				18	9620	79.75	105600	1.85	YFKAFI57	4	840
45	3210	32.69	47300	2.2				21	8490	70.38	103400	2.1			
47	3070	31.27	47000	2.2				24	7360	61.02	100700	2.5			
50	2840	29.00	46400	2.5				27	6550	54.29	98500	2.8			
30	4700	47.93	28100	0.90	YFK97	4	265	31	5640	46.79	95500	3.2			
35	4110	41.87	28400	1.05	YFKF97	4	285	39	4580	38.02	91300	3.9			
38	3760	38.30	28500	1.15	YFKA97	4	245								
43	3360	34.23	28500	1.30	YFKAF97	4	270	13	13300	110.18	79000	1.00	YFKI27	4	580
47	3020	30.82	28400	1.40				16	10800	89.89	79000	1.20	YFKFI27	4	620
52	2740	27.91	28300	1.55				18	98900	81.98	78500	1.30	YFKAI27	4	550
59	2460	24.75	28000	1.75				21	8560	70.95	77500	1.50	YFKAFI27	4	590
65	2190	22.37	27700	1.95				23	7550	62.60	76400	1.70			
77	1860	18.96	27200	2.3				27	6520	54.07	74800	2.0			
88	1620	16.56	26600	2.7				31	5770	47.82	73400	2.2			
47	3080	31.39	17300	0.90	YFK87	4	205	36	4850	40.19	69900	2.7			
52	2730	27.88	17600	0.95	YFKF87	4	215	40	4370	36.25	68000	3.0			
59	2440	24.92	17800	1.00	YFKA87	4	190	47	3780	31.37	68000	3.4			
65	2200	22.41	18000	1.05	YFKAF87	4	205	53	3340	27.68	66200	3.9			
75	1910	19.45	18000	1.20				20	8840	73.30	46300	0.90	YFKI07	4	430
84	1710	17.42	18000	1.30				22	8020	66.52	46600	1.00	YFKFI07	4	440
91	1570	16.00	17800	1.55				26	6890	57.19	46800	1.15	YFKAI07	4	400
101	1420	14.45	17800	1.50				29	6020	49.90	46700	1.30	YFKAFI07	4	425
116	1230	12.56	17600	1.60				35	5100	42.33	46300	1.45			
131	1100	11.17	16600	1.35				40	4460	3700	45700	1.60			
146	980	10.00	16400	1.55				45	3940	32.69	45100	1.80			
176	810	8.29	16000	1.70				47	3770	31.28	44900	1.85			
202	705	7.21	15700	1.85				51	3500	29.00	44400	2.1			
18.5kW								56	3170	26.32	43800	2.3			
2.8	57800	520	176300	0.85				65	2730	22.62	42700	2.6			
3.2	50400	454	189200	1.00	YFKI87RI07	4	1970	74	2380	19.74	41700	3.0			
4.1	39500	355	190000	1.25				88	2020	16.75	40400	3.5			
5.6	29000	261	190000	1.70	YFKAI87RI07	4	1970								
6.6	24600	221	190000	2.0				35	5050	41.87	25100	0.85	YFK97	4	315
4.6	35300	318	150000	0.90				48	3720	30.82	26000	1.15	YFKI97	4	335
5.3	30800	278	150000	1.05	YFKI67RI07	4	1380	53	3360	27.91	26000	1.30	YFKA97	4	395
6.0	27100	244	150000	1.20				59	2980	24.75	26000	1.45	YFKAF97	4	320
6.9	23600	213	150000	1.35	YFKAI67RI07	4	1380	65	2700	22.37	25900	1.60			
7.1	22800	206	150000	1.40				77	2290	18.96	25700	1.90			
8.1	20000	180	150000	1.60				88	2000	16.56	25300	2.2			
9.2	17700	160	150000	1.80				106	1670	13.85	24800	2.6			
11	15000	135	150000	2.1				122	1450	11.99	24300	2.7			
12	13100	118	150000	2.4											
7.8	20700	187	110700	0.85	YFKI57RI07	4	990	59	3000	24.92	15600	0.85	YFK87	4	255
9.3	17400	157	112500	1.05	YFKFI57RI07	4	1070	65	2700	22.41	15900	0.82	YFKF87	4	265
12	13600	122	114100	1.35	YFKAI57RI07	4	950	75	2340	19.45	16200	1.00	YFKA87	4	240
14	11900	107	112300	1.50	YFKAFI57RI07	4	1010	84	2100	17.42	16400	1.05	YFKAF87	4	255
5.4	32800	179.86	190000	1.55	YFKI87	6	1850	101	1740	14.45	16500	1.20			
5.9	30100	165.21	190000	1.65				117	1510	12.56	16400	1.30			
6.7	26300	144.59	190000	1.90	YFKAI87	6	1850	131	1350	11.17	15400	1.10			
7.5	23600	129.69	190000	2.1				147	1210	10.00	15300	1.25			
								177	1000	8.29	15100	1.40			
								203	870	7.21	14900	1.50			

输出转速 output speed na r/min	输出转矩 output torque Ma N.m	传动比 Ratio i	径向载荷 Permissible overhung load outputside Fa N	使用系数 service factor fb	机型号 Type	极数 Pole	重量 weight kg	输出转速 output speed na r/min	输出转矩 output torque Ma N.m	传动比 Ratio i	径向载荷 Permissible overhung load outputside Fa N	使用系数 service factor fb	机型号 Type	极数 Pole	重量 weight kg
45kW								75kW							
51	8480	29.00	25600	0.85	YFK107	4	570	39	18400	38.02	60800	1.00	YFK157	4	1220
56	7690	26.32	28300	0.95	YFKF107	4	590	47	15100	31.30	62200	1.20	YFKF157	4	1300
65	6610	22.62	31000	1.10	YFKA107	4	550	54	13400	27.62	62600	1.35	YFKA157	4	1190
74	5770	19.74	31700	1.25	YFKAF107	4	570	62	11600	23.95	62600	1.55	YFKAF157	4	1250
88	4890	16.75	31900	1.45				69	10300	21.31	62400	1.75			
100	4280	14.64	31900	1.60				81	8890	18.37	61800	2.0			
109	3930	13.43	29900	1.10				99	7220	14.92	60500	2.5			
125	3430	11.73	29900	1.25				117	6120	12.65	59300	2.8			
148	2910	9.94	29600	1.45											
169	2540	8.69	29300	1.60				47	15200	31.37	39200	0.85	YFK127	4	990
55kW								53	13400	27.68	40800	0.95	YFKF127	4	1030
10	51500	144.59	187400	0.95	YFK187	4	2070	62	11600	23.91	42200	1.10	YFKA127	4	960
11	46200	129.69	190000	1.10				70	10200	21.15	42900	1.25	YFKAF127	4	1000
13	40100	112.60	188500	1.25	YFKA187	4	2070	83	8600	17.77	43500	1.50			
14	36400	102.16	187100	1.35				103	6940	14.35	43700	1.75			
17	31300	88.00	184200	1.60				116	6190	12.79	41100	1.40			
20	26300	73.96	180200	1.90				138	5200	10.74	41000	1.55			
23	22800	64.04	176300	2.2				171	4200	8.68	40400	1.70			
								90kW							
								14	59300	102.16	151300	0.85	YFK187	4	2280
								17	51100	88.00	153400	1.00			
								20	42900	73.96	154200	1.15	YFKA187	4	2280
								22	37200	64.04	153800	1.35			
								28	31000	53.36	152200	1.60			
								33	26400	45.50	149900	1.90			
								35	24700	42.51	148700	2.0			
								38	22400	38.57	146900	2.2			
								22	39500	68.07	115100	0.80	YFK167	4	1690
								24	35300	60.74	116600	0.90			
								29	30100	51.77	117600	1.05	YFKA167	4	1690
								35	24900	42.89	117600	1.30			
								40	21300	36.61	116700	1.50			
								46	18700	32.25	115500	1.70			
								51	16700	28.77	114200	1.90			
								60	14200	24.52	111900	2.2			
								73	11800	20.32	108800	2.7			
								85	10100	17.34	106000	3.2			
								39	22100	38.02	52700	0.80	YFK157	4	1300
								47	18200	31.30	55500	1.00	YFKF157	4	1380
								54	16000	27.62	56700	1.10	YFKA157	4	1260
								62	13900	23.95	57500	1.30	YFKAF157	4	1320
								69	12400	21.31	57900	1.45			
								81	10700	18.37	57900	1.70			
								99	8670	14.92	57400	2.1			
								117	7350	12.65	56600	2.3			
								62	13900	23.91	36400	0.95	YFK127	4	1070
								70	12300	21.15	37800	1.05	YFKF127	4	1110
								83	10300	17.77	39200	1.25	YFKA127	4	1040
								103	8330	14.35	40200	1.45	YFKAF127	4	1080
								116	7420	12.79	37600	1.15			
								138	6240	10.74	38000	1.30			
								171	5040	8.68	38000	1.45			
75kW								110kW							
11	62800	129.69	164100	0.80	YFK187	4	2200	17	62300	88.00	136000	0.80	YFK187	4	2460
13	54500	112.60	166100	0.90				20	52300	73.96	139500	0.95			
14	49400	102.16	166600	1.00	YFKA187	4	2200	23	45300	64.04	141000	1.10	YFKA187	4	2460
17	42600	88.00	166600	1.15				28	37700	53.36	141500	1.30			
20	35800	73.96	165300	1.40				33	32200	45.50	140800	1.55			
23	31000	64.04	163400	1.60				35	30100	42.51	140200	1.65			
28	25800	53.36	160100	1.95				39	27300	38.57	139100	1.85			
33	22000	45.50	156700	2.3				45	23500	33.23	137000	2.1			
								53	19800	27.92	134000	2.5			
								29	36600	51.77	105500	0.85	YFK167	4	1880
19	37800	78.14	126100	0.85	YFK167	4	1620	35	30300	42.89	107500	1.05			
22	32900	68.07	127100	0.95				41	25900	36.61	108100	1.25	YFKA167	4	1880
24	29400	60.74	127300	1.10	YFKA167	4	1620	46	22800	32.25	107900	1.40			
29	25100	51.77	126800	1.30				52	20400	28.77	107400	1.55			
35	20800	42.89	125200	1.55				61	17300	24.52	106100	1.85			
40	17700	36.61	123200	1.80				73	14400	20.32	104000	2.2			
46	15600	32.25	121300	2.0				86	12300	17.34	101800	2.6			
51	13900	28.77	119300	2.3											
60	11900	24.52	116300	2.7											

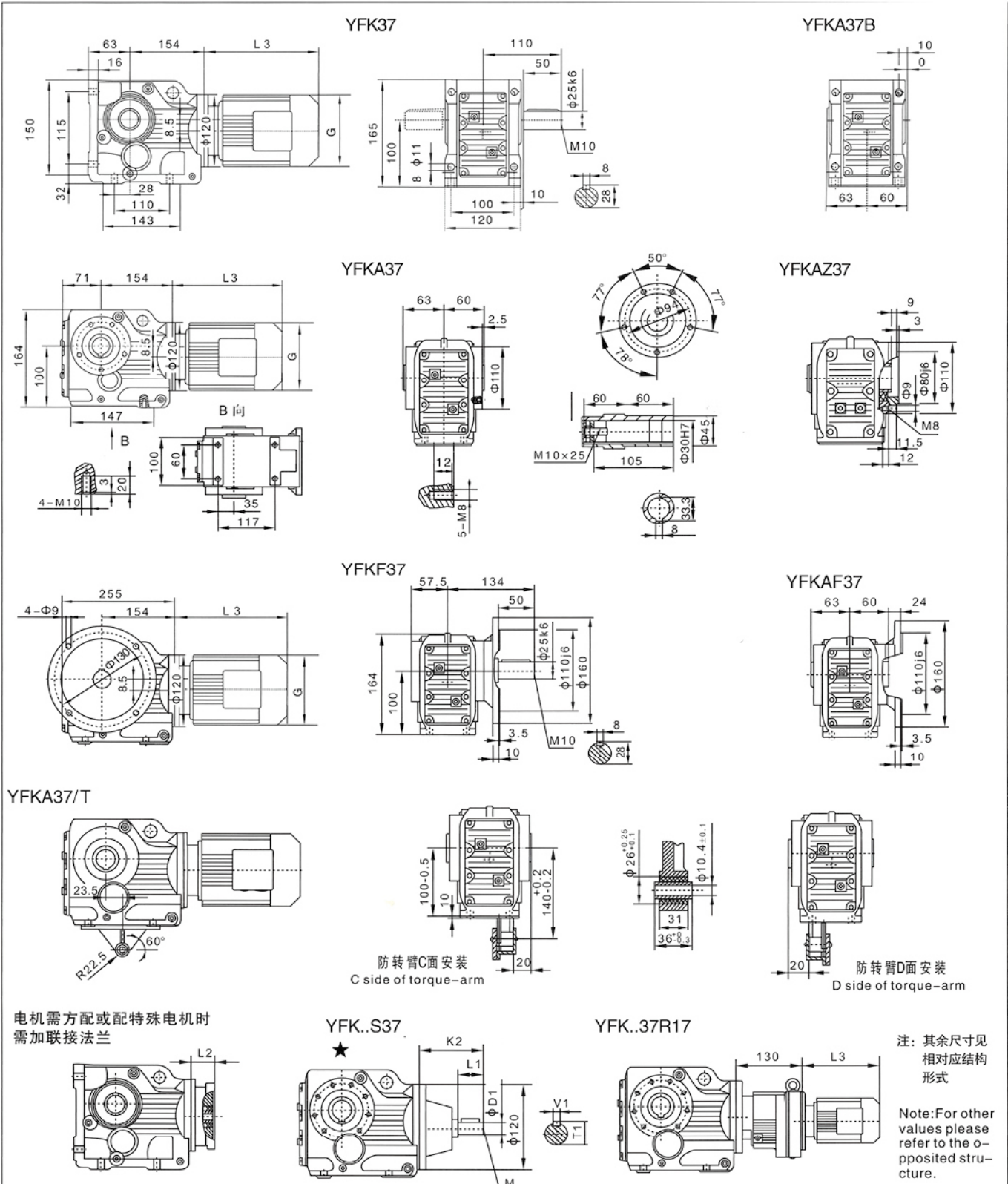
输出转速 output speed na r/min	输出转矩 output torque Ma N.m	传动比 Ratio i	径向载荷 Permissible overhung load outsidside Fa N	使用系数 service factor fb	机型号 Type	极数 Pole	重量 weight kg	输出转矩 output torque Ma N.m	输出转速 output speed na r/min	传动比 Ratio i	径向载荷 Permissible overhung load outsidside Fa N	机型号 Type	功 率 Power kw/4p	重量 weight kg	
110kW															
62	16900	23.95	50800	1.05	YFKI57	4	1490	200	0.20	6832	5640	YFK37R17	0.12	19	
70	15100	21.31	51900	1.20	YFKF157	4	1560		0.23	5922	5640	YFKF37R17	0.12	22	
81	13000	18.37	52700	1.40	YFKA157	4	1450		0.25	5491	5640	YFKA37R17	0.12	19	
100	10600	14.92	53100	1.70	YFKAF157	4	1510		0.29	4759	5640	YFKAF37R17	0.12	21	
117	8950	12.65	53000	1.90					0.33	4160	5640				
132kW															
20	62800	73.96	123300	0.80	YFK187	4	2560		0.38	3645	5640				
23	54400	64.04	127000	0.90					0.43	3205	5640				
28	45300	53.36	129800	1.10	YFKA187	4	2560		0.49	2801	5640				
33	38600	45.50	130800	1.30					0.56	2454	5640				
35	36100	42.51	130900	1.40					0.64	2166	5640				
39	32700	38.57	130700	1.55				0.73	1891	5640					
45	28200	33.23	129800	1.75				0.83	1660	5640					
53	23700	27.92	127900	2.1				0.94	1466	5640					
61	20500	24.18	125900	2.3				1.1	1288	5640					
74	17100	20.15	122800	2.6				1.2	1136	5640					
86	14600	17.18	119700	2.8				1.4	996	5640					
								1.6	876	5640					
								1.8	761	5640					
								2.1	671	5640					
35	36400	42.89	96400	0.90	YFK167	4	1980	2.4	585	5640					
41	31100	36.61	98600	1.05				2.7	512	5640					
46	27400	32.25	99600	1.15	YFKA167	4	1980	3.1	451	5640					
52	24400	28.77	99900	1.30				3.5	396	5640					
61	20800	24.52	99800	1.55				4.0	346	5640					
73	17200	20.32	98700	1.85											
86	14700	17.34	97300	2.2				4.3	304	5640	YFK37R17	0.18	19		
								4.9	267	5640	YFKF37R17	0.18	21		
62	20300	23.95	43400	0.90	YFK157	4	1590	5.7	234	5640	YFKA37R17	0.18	19		
70	18100	21.31	45300	1.00	YFKF157	4	1660	6.4	205	5640	YFKAF37R17	0.18	20		
81	15600	18.37	47000	1.15	YFKA157	4	1550								
100	12700	14.92	48500	1.40	YFKAF157	4	1610								
117	10700	12.65	49100	1.60				7.2	181	5640	YFK37R17	0.25	20		
160kW															
28	54900	53.36	114900	0.90	YFK187	4	2560	8.1	160	5640	YFKF37R17	0.25	22		
33	46800	45.50	118100	1.05				9.5	136	5640	YFKA37R17	0.25	19		
45	34200	33.23	120500	1.45	YFKA187	4	2560	10	127	5640	YFKAF37R17	0.25	21		
53	28700	27.92	120100	1.75				12	110	5640	YFK37R17	0.37	21		
61	24900	24.18	119100	1.90				14	96	5640	YFKF37R17	0.37	23		
74	20700	20.15	117200	2.1							YFKA37R17	0.37	20		
86	17700	17.18	114900	2.3							YFKAF37R17	0.37	22		
								400	0.14	10138	5920	YFK47R37	0.12	34	
								0.16	8534	5920	YFKF47R37	0.12	37		
								0.18	7662	5920	YFKA47R37	0.12	33		
								0.20	6826	5920	YFKAF47R37	0.12	36		
								0.23	5983	5920					
								0.27	5159	5920					
								0.30	4601	5920					
								0.35	3940	5920					
								0.40	3477	5920					
								0.45	3043	5920					
								0.51	2733	5920					
								0.59	2354	5920					
								0.67	2063	5920					
								0.76	1819	5920					
								0.87	1586	5920					
								0.99	1388	5920					
								1.1	1222	5920					
								1.3	1097	5920					
								1.5	945	5920					
								1.7	831	5920					
								1.9	718	5920					
								2.2	639	5920					
100	19200	14.92	34200	0.95	YFK157	4	1590	2.4	552	5920	YFK47R37	0.18	33		
117	16300	12.65	36900	1.05	YFKF157	4	1660	2.7	495	5920	YFKF47R37	0.18	36		
					YFKA157	4	1550	3.1	426	5920	YFKA47R37	0.18	32		
					YFKAF157	4	1610				YFKAF47R37	0.18	35		
								3.5	375	5920	YFK47R37	0.25	34		
								4.0	327	5920	YFKF47R37	0.25	37		
								4.5	289	5920	YFKA47R37	0.25	33		
											YFKAF47R37	0.25	36		

输出转矩 output torque Ma N.m	输出转速 output speed na r/min	传动比 Ratio i	径向载荷 Permissible overhung load outputsida Fa N	机型号 Type	功率 Power kw/4p	重量 weight kg	输出转矩 output torque Ma N.m	输出转速 output speed na r/min	传动比 Ratio i	径向载荷 Permissible overhung load outputsida Fa N	机型号 Type	功率 Power kw/4p	重量 weight kg						
400	5.4	256	5920	YFK47R37	0.37	35	820	0.79	1739	10300	YFK67R37	0.12	45						
	6.2	225	5920	YFKF47R37	0.37	38		0.90	1535	10300	YFKF67R37	0.12	51						
	7.0	198	5920	YFKA47R37	0.37	34		1.0	1351	10300	YFKA67R37	0.12	42						
				YFKAF47R37	0.37	37						YFKAF67R37	0.12	48					
	7.9	171	5920	YFK47R37	0.55	37		1.1	1171	10300	YFK67R37	0.18	45						
	8.9	153	5920	YFKF47R37	0.55	40		1.3	1034	10300	YFKF67R37	0.18	51						
	10	131	5920	YFKA47R37	0.55	36		1.5	903	10300	YFKA67R37	0.18	42						
				YFKAF47R37	0.55	39		1.7	793	10300	YFKAF67R37	0.18	48						
	600	0.11	12169	7630	YFK57R37	0.12		39	1550	0.09	15310	15400	YFK77R37	0.12	69				
		0.12	11162	7630	YFKF57R37	0.12		44											
		0.15	9503	7630	YFKA57R37	0.12		37											
		0.16	8547	7630	YFKAF57R37	0.12		43											
		0.19	7277	7630															
		0.21	6478	7630															
0.24		5662	7630																
0.27		5033	7630																
0.32		4340	7630																
0.36		3854	7630																
0.41		3390	7630																
0.47		2924	7630																
0.53		2593	7630																
0.61		2249	7630																
0.70		1986	7630																
0.79		1743	7630																
0.90		1539	7630																
1.0		1354	7630																
1.2		1174	7630																
1.3		1036	7630																
1.5		906	7630	YFK57R37	0.18	39	0.14	10217								15400	YFKAF77R37	0.12	70
1.6		806	7630	YFKF57R37	0.18	44	0.16	8809								15400			
1.9		699	7630	YFKA57R37	0.18	37	0.18	7528								15400			
2.2		615	7630	YFKAF57R37	0.18	43	0.21	6606								15400			
2.4		544	7630	YFK57R37	0.25	40	0.24	5774								15400			
2.8		473	7630	YFKF57R37	0.25	45	0.27	5089								15400			
3.1		421	7630	YFKA57R37	0.25	38	0.31	4489								15400			
				YFKAF57R37	0.25	43	0.35	3961								15400			
3.8		362	7630	YFK57R37	0.37	41	0.40	3485								15400			
4.3		319	7630	YFKF57R37	0.37	45	0.48	2901								15400			
4.9		280	7630	YFKA57R37	0.37	39	0.51	2717								15400			
				YFKAF57R37	0.37	44	0.56	2370								15400	YFK77R37	0.18	69
5.5		246	7630	YFK57R37	0.55	43	0.64	2050								15400	YFKF77R37	0.18	78
6.3		215	7630	YFKF57R37	0.55	47	0.75	1772								15400	YFKA77R37	0.18	62
7.1		192	7630	YFKA57R37	0.55	43	0.87	1514								15400	YFKAF77R37	0.18	70
				YFKAF57R37	0.55	46													
8.3	166	7630	YFK57R37	0.75	44	0.94	1388	15400	YFK77R37	0.25	70								
9.6	145	7630	YFKF57R37	0.75	48	1.1	1218	15400	YFKF77R37	0.25	78								
11	129	7630	YFKA57R37	0.75	42	1.2	1053	15400	YFKA77R37	0.25	62								
			YFKAF57R37	0.75	47				YFKAF77R37	0.25	70								
13	111	7630	YFK57R37	1.1	49	1.5	924	15400	YFK77R37	0.37	71								
14	97	7630	YFKF57R37	1.1	54	1.7	815	15400	YFKF77R37	0.37	79								
			YFKA57R37	1.1	47	2.0	709	15400	YFKA77R37	0.37	63								
			YFKAF57R37	1.1	53				YFKAF77R37	0.37	71								
820	0.11	12139	10300	YFK67R37	0.12	45	2.2	622	15400	YFK77R37	0.55	73							
	0.12	11134	10300	YFKF67R37	0.12	51	2.5	552	15400	YFKF77R37	0.55	81							
	0.15	9479	10300	YFKA67R37	0.12	43	2.8	485	15400	YFKA77R37	0.55	65							
	0.17	8173	10300	YFKAF67R37	0.12	48				YFKAF77R37	0.55	73							
	0.19	7259	10300				3.2	428	15400	YFK77R37	0.75	74							
	0.21	6462	10300				3.8	367	15400	YFKF77R37	0.75	82							
	0.24	5648	10300							YFKA77R37	0.75	66							
	0.28	4846	10300							YFKAF77R37	0.75	74							
	0.32	4329	10300																
	0.37	3750	10300																
	0.42	3315	10300																
	0.47	2917	10300																
	0.55	2532	10300																
	0.62	2244	10300																
	0.70	1981	10300																

输出转矩 output torque Ma N.m	输出转速 output speed na r/min	传动比 Ratio i	径向载荷 Permissible overhung load outpside Fa N	机型号 Type	功率 Power kw/4p	重量 weight kg	输出转矩 output torque Ma N.m	输出转速 output speed na r/min	传动比 Ratio i	径向载荷 Permissible overhung load outpside Fa N	机型号 Type	功率 Power kw/4p	重量 weight kg	
1550	4.3	328	15400	YFK77R37	1.1	79	4300	0.36	3583	40000	YFK97R57	0.25	180	
	4.8	290	15400	YFKF77R37	1.1	87		0.42	3108	40000	YFKF97R57	0.25	200	
	5.6	252	15400	YFKA77R37	1.1	72					YFKA97R57	0.25	160	
				YFKAF77R37	1.1	79					YFKAF97R57	0.25	185	
	0.09	14829	27300	YFK87R57	0.12	120		0.50	2757	40000	YFK97R57	0.37	180	
	0.10	13168	27300	YFKF87R57	0.12	130		0.57	2419	40000	YFKF97R57	0.37	200	
	0.12	11737	27300	YFKA87R57	0.12	105		0.32	2123	40000	YFKA97R57	0.37	165	
	0.14	10217	27300	YFKAF87R57	0.12	120					YFKAF97R57	0.37	190	
	0.15	9073	27300					0.73	1856	40000	YFK97R57	0.55	180	
	0.18	7854	27300					0.84	1625	40000	YFKF97R57	0.55	205	
	0.20	6832	27300					0.95	1430	40000	YFKA97R57	0.55	165	
	0.23	5930	27300					1.1	1261	40000	YFKAF97R57	0.55	190	
	0.26	5240	27300											
	0.30	4562	27300					1.2	1102	40000	YFK97R57	0.75	185	
								1.4	957	40000	YFKF97R57	0.75	205	
	0.33	4037	27300	YFK87R57	0.18	120					YFKA97R57	0.75	165	
	0.37	3609	27300	YFKF87R57	0.18	130					YFKAF97R57	0.75	190	
	0.42	3107	27300	YFKA87R57	0.18	105			1.6	855	40000	YFK97R57	1.1	190
	0.48	2728	27300	YFKAF87R57	0.18	120			1.9	743	40000	YFKF97R57	1.1	210
									2.2	652	40000	YFKA97R57	1.1	170
	0.55	2371	27300	YFK87R57	0.25	120					YFKAF97R57	1.1	195	
	0.62	2088	27300	YFKF87R57	0.25	130			2.5	573	40000	YFK97R57	1.5	190
	0.70	1854	27300	YFKA87R57	0.25	105			2.8	504	40000	YFKF97R57	1.5	210
				YFKAF87R57	0.25	120					YFKA97R57	1.5	170	
	0.83	1657	27300	YFK87R57	0.37	120					YFKAF97R57	1.5	195	
	0.97	1415	27300	YFKF87R57	0.37	130			3.2	437	40000	YFK97R57	2.2	195
	1.1	1229	27300	YFKA87R57	0.37	110			3.7	382	40000	YFKF97R57	2.2	220
				YFKAF87R57	0.37	120			4.1	342	40000	YFKA97R57	2.2	180
	1.3	1078	27300	YFK87R57	0.55	120					YFKAF97R57	2.2	205	
	1.4	951	27300	YFKF87R57	0.55	130			4.6	305	40000	YFK97R57	3	200
	1.6	837	27300	YFKA87R57	0.55	110			5.4	258	40000	YFKF97R57	3	220
				YFKAF87R57	0.55	125			6.0	232	40000	YFKA97R57	3	185
	1.9	726	27300	YFK87R57	0.75	125					YFKAF97R57	3	210	
	2.2	638	27300	YFKF87R57	0.75	130			7.1	199	40000	YFK97R57	4	210
				YFKA87R57	0.75	110					YFKF97R57	4	230	
				YFKAF87R57	0.75	125					YFKA97R57	4	190	
2.5	562	27300	YFK87R57	1.1	130				YFKAF97R57	4	215			
3.0	474	27300	YFKF87R57	1.1	135		8000	0.10	14311	65000	YFKI07R77	0.12	310	
3.3	426	27300	YFKA87R57	1.1	115		0.11	12211	65000	YFKF107R77	0.12	320		
			YFKAF87R57	1.1	130				YFKA107R77	0.12	285			
3.8	373	27300	YFK87R57	1.5	130				YFKAF107R77	0.12	305			
4.3	330	27300	YFKF87R57	1.5	140		0.12	10677	65000	YFKI07R77	0.18	310		
			YFKA87R57	1.5	120		0.14	9524	65000	YFKF107R77	0.18	325		
			YFKAF87R57	1.5	130		0.16	8328	65000	YFKA107R77	0.18	280		
4.8	294	27300	YFK87R57	2.2	135				YFKAF107R77	0.18	305			
5.6	250	27300	YFKF87R57	2.2	145		0.18	7270	65000	YFKI07R77	0.25	310		
6.0	236	27300	YFKA87R57	2.2	125		0.21	6184	65000	YFKF107R77	0.25	320		
7.0	201	27300	YFKAF87R57	2.2	140		0.23	5662	65000	YFKA107R77	0.25	285		
									YFKAF107R77	0.25	305			
4300	0.08	18091	40000	YFK97R57	0.12	180	0.27	5138	65000	YFKI07R77	0.37	310		
	0.08	16666	40000	YFKF97R57	0.12	200	0.32	4359	65000	YFKF107R77	0.37	325		
	0.09	14897	40000	YFKA97R57	0.12	160	0.36	3810	65000	YFKA107R77	0.37	285		
	0.10	13182	40000	YFKAF97R57	0.12	185			YFKAF107R77	0.37	305			
	0.12	11677	40000				0.41	3358	65000	YFKI07R77	0.55	315		
	0.13	10317	40000				0.46	2977	65000	YFKF107R77	0.55	325		
	0.15	9083	40000				0.52	2599	65000	YFKA107R77	0.55	285		
	0.17	8054	40000						YFKAF107R77	0.55	310			
	0.20	6970	40000				0.60	2286	65000	YFKI07R77	0.75	315		
							0.71	1939	65000	YFKF107R77	0.75	325		
									YFKA107R77	0.75	285			
									YFKAF107R77	0.75	310			

输出转矩 output torque Ma N.m	输出转速 output speed na r/min	传动比 Ratio i	径向载荷 Permissible overhung load outputside Fa N	机型号 Type	功率 Power kw/4p	重量 weight kg	输出转矩 output torque Ma N.m	输出转速 output speed na r/min	传动比 Ratio i	径向载荷 Permissible overhung load outputside Fa N	机型号 Type	功率 Power kw/4p	重量 weight kg			
8000	0.82	1713	65000	YFK107R77	1.1	320	13000	2.3	610	79200	YFK127R77	4	495			
	0.90	1554	65000	YFKF107R77	1.1	330		2.6	549	79200	YFKF127R77	4	540			
	1.0	1336	65000	YFKA107R77	1.1	290					YFKA127R77	4	470			
				YFKAF107R77	1.1	315					YFKAF127R77	4	510			
	1.2	1166	65000	YFK107R77	1.5	320										
	1.4	1030	65000	YFKF107R77	1.5	330			2.7	536	79200	YFK127R77	5.5	520		
	1.6	904	65000	YFKA107R77	1.5	290			3.0	473	79200	YFKF127R77	5.5	570		
				YFKAF107R77	1.5	315			3.4	418	79200	YFKA127R77	5.5	495		
	1.8	793	65000	YFK107R77	2.2	325						YFKAF127R77	5.5	530		
	2.0	696	65000	YFKF107R77	2.2	340										
	2.3	615	65000	YFKA107R77	2.2	300			3.9	367	79200	YFK127R77	7.5	550		
				YFKAF107R77	2.2	325										
	2.7	522	65000	YFK107R77	3	330		18000	4.3	330	79200	YFKF127R77	7.5	592		
	3.0	461	65000	YFKF107R77	3	340				5.0	287	79200	YFKA127R77	7.5	520	
				YFKA107R77	3	305							YFKAF127R77	7.5	550	
				YFKAF107R77	3	325										
	3.5	408	65000	YFK107R77	4	335				0.08	17679	112200	YFK157R97	0.55	550	
	3.9	364	65000	YFKF107R77	4	350				0.09	15729	112200	YFKF157R97	0.55	600	
				YFKA107R77	4	310				0.09	14721	112200	YFKA157R97	0.55	530	
				YFKAF107R77	4	335				0.10	13097	112200	YFKAF157R97	0.55	560	
	4.5	318	65000	YFK107R77	5.5	345				0.12	11368	112200				
	5.0	286	65000	YFKF107R77	5.5	355				0.13	10114	112200				
	5.7	251	65000	YFKA107R77	5.5	315				0.16	8718	112200				
				YFKAF107R77	5.5	340				0.18	7734	112200				
	13000	0.08	17550	79200	YFK127R77	0.18			470		0.28	5074	112200	YFK157R97	1.1	790
		0.08	16006	79200	YFKF127R77	0.18			510		0.31	4514	112200	YFKF157R97	1.1	870
		0.09	14975	79200	YFKA127R77	0.18			440		0.35	3979	112200	YFKA157R97	1.1	750
		0.11	12440	79200	YFKAF127R77	0.18			480		0.40	3516	112200	YFKAF157R97	1.1	810
											0.46	3051	112200			
		0.12	10915	79200	YFK127R77	0.25			470		0.54	2610	112200	YFK157R97	1.5	800
0.13		9819	79200	YFKF127R77	0.25	510			0.61	2322	112200	YFKF157R97	1.5	870		
				YFKA127R77	0.25	440						YFKA157R97	1.5	760		
				YFKAF127R77	0.25	480						YFKAF157R97	1.5	820		
0.16		8443	79200	YFK127R77	0.37	470			0.70	2029	112200	YFK157R97	2.2	800		
0.18		7482	79200	YFKF127R77	0.37	510			0.78	1805	112200	YFKF157R97	2.2	880		
0.21		6565	79200	YFKA127R77	0.37	445			0.85	1659	112200	YFKA157R97	2.2	770		
				YFKAF127R77	0.37	480			1.0	1365	112200	YFKAF157R97	2.2	830		
0.23		5804	79200	YFK127R77	0.55	475										
0.27		5027	79200	YFKF127R77	0.55	520			1.1	1229	112200	YFK157R97	3	810		
0.31		4423	79200	YFKA127R77	0.55	445			1.3	1093	112200	YFKF157R97	3	880		
0.35		3889	79200	YFKAF127R77	0.55	480						YFKA157R97	3	770		
												YFKAF157R97	3	830		
0.42		3311	79200	YFK127R77	0.75	475		1.5	942	112200	YFK157R97	4	810			
0.46		3009	79200	YFKF127R77	0.75	520		1.7	854	112200	YFKF157R97	4	890			
				YFKA127R77	0.75	445		1.9	756	112200	YFKA157R97	4	780			
				YFKAF127R77	0.75	485					YFKAF157R97	4	830			
0.54		2607	79200	YFK127R77	1.1	480		2.2	661	112200	YFK157R97	5.5	820			
0.62		2268	79200	YFKF127R77	1.1	520		2.5	567	112200	YFKF157R97	5.5	900			
0.73		1926	79200	YFKA127R77	1.1	450					YFKA157R97	5.5	780			
				YFKAF127R77	1.1	490					YFKAF157R97	5.5	840			
0.80		1757	79200	YFK127R77	1.5	480										
0.91		1541	79200	YFKF127R77	1.5	520										
				YFKA127R77	1.5	450										
				YFKAF127R77	1.5	490										
1.0	1342	79200	YFK127R77	2.2	485											
1.2	1177	79200	YFKF127R77	2.2	530											
1.4	1025	79200	YFKA127R77	2.2	460											
			YFKAF127R77	2.2	495											
1.6	899	79200	YFK127R77	3	490											
1.8	790	79200	YFKF127R77	3	530											
2.0	704	79200	YFKA127R77	3	465											
			YFKAF127R77	3	500											

输出转矩 output torque Ma N.m	输出转速 output speed na r/min	传动比 Ratio i	径向载荷 Permissible overhung load outsided Fa N	机型号 Type	功率 Power kw/4p	重量 weight kg	输出转矩 output torque Ma N.m	输出转速 output speed na r/min	传动比 Ratio i	径向载荷 Permissible overhung load outsided Fa N	机型号 Type	功率 Power kw/4p	重量 weight kg				
18000	2.8	504	112200	YFKI57R97	7.5	840	32000	6.9	213	150000	YFKI67R107	30	1450				
	3.3	434	112200	YFKFI57R97	7.5	920		7.1	206	150000							
	3.8	379	112200	YFKAI57R97	7.5	800		8.1	180	150000	YFKAI67R107	30	1450				
	4.3	333	112200	YFKAFI57R97	7.5	860		9.2	160	150000	YFKI87R97	37	1500				
	4.9	291	112200	YFKI57R97	11	850		YFKAI87R97	37	1500							
					11	930											
					11	820			11	135	150000	YFKI87R97	45	1530			
	4.8	299	112200	YFKAFI57R97	11	870		YFKAI87R97	45	1530							
					11	900			12	118	150000						
					11	980											
	5.8	253	112200	YFKAI57R107	11	860		YFKI87R97	0.55	1760	32625	189900	YFKI87R97	0.55	1760		
					11	920			27165	189900							
					11	920			24353	189900	YFKAI87R97	0.55	1760				
					15	940			19144	189900							
					15	1020			16978	189900							
					15	900											
					15	960			0.10	14272	189900	YFKI87R97	0.75	1770			
					15	960			0.11	13116	189900						
					15	960			0.12	11647	189900	YFKAI87R97	0.75	1770			
	32000	0.07	19723	150000	YFKI67R97	0.55		1180	0.13	10413	189900	YFKI87R97	1.1	1770			
		0.08	17406	150000					0.15	9363	189900						
0.09		15000	150000	YFKAI67R97	0.55	1180	0.17	8126	189900	YFKAI87R97	1.1	1770					
0.10		13238	150000				0.19	7343	189900	YFKI87R97	1.5	1770					
0.12		11573	150000			0.21		6747	189900								
0.13		10264	150000			0.24		5991	189900	YFKAI87R97	1.5	1770					
0.16		8628	150000	YFKI67R97	0.75	1180	0.26	5358	189900	YFKI87R97	2.2	1780					
				YFKAI67R97	0.75	1180	0.29	4817	189900								
0.21		8562	150000	YFKI67R97	1.1	1190	YFKAI87R97	2.2	1780	0.32	4370	189900	YFKAI87R97	2.2	1780		
					1.1	1190											
0.29		4788	150000	YFKI67R97	1.5	1190	YFKAI87R97	3	1780	0.39	3609	189900	YFKI87R97	3	1780		
					1.5	1190		0.46	3062					189900			
0.35		4079	150000	YFKAI67R97	1.5	1190	YFKI87R97	4	1790	0.56	2519	189900	YFKI87R97	4	1790		
					2.2	1200		0.63	2268					189900	YFKAI87R97	4	1790
					2.2	1200										0.69	2054
0.42		3376	150000	YFKI67R97	2.2	1200	YFKAI87R97	5.5	1790	0.79	1821	189900	YFKI87R97	5.5	1790		
					2.2	1200		0.87	1605					189900	YFKAI87R97	5.5	1790
0.62		2263	150000	YFKI67R97	3	1200	YFKAI87R97			7.5	1810	1.0	1395			189900	YFKI87R97
					3	1200		1.2	1196	189900							
0.83		1704	150000	YFKI67R97	4	1210	YFKAI87R97	15	1870	2.0	738	189900	YFKI87R97	15	1870		
					4	1210		2.3	621					189900			
1.1		1296	150000	YFKI67R97	5.5	1210	YFKAI87R97	18.5	1920	2.8	527	189900	YFKI87R97	18.5	1920		
					5.5	1210		1.7	835					189900	YFKI87R97	11	1870
1.5		944	150000	YFKI67R97	7.5	1230	YFKAI87R97			11	1870	2.0	729			189900	YFKI87R97
					7.5	1230		2.3	622	189900	YFKAI87R97			15	1920		
					7.5	1230								2.8	520		
2.6		561	150000	YFKI67R97	11	1250	YFKAI87R97	18.5	1970	3.2	454	189900	YFKAI87R97	18.5	1970		
					11	1250		4.1	355					189900	YFKI87R97	30	2030
3.5		423	150000	YFKI67R97	15	1290	YFKAI87R97			30	2030	5.6	261			189900	YFKI87R97
					15	1290		YFKAI87R97	37	2080							
4.6		318	150000	YFKI67R107	18.5	1380	YFKAI87R97		37	2080	6.6	221	189900	YFKI87R97	45	2110	
					18.5	1380		7.6	193	189900					YFKAI87R97	45	2110
					22	1400										9.0	163



电机需方配或配特殊电机时需加联接法兰

When equipping the user's motor or the special one, the flange is required to be connected.

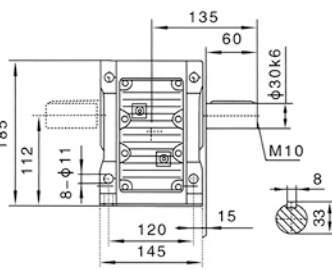
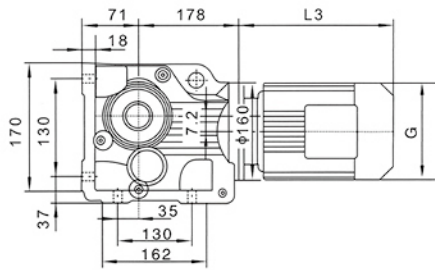
Y2电机机座号 Motor size	63	71	80	90S	90L	100			
功率/4P Power/(kW)	0.18	0.25 0.37	0.55 0.75	1.1	1.5	2.2 3.0			
L3	235	250	293	308	333	347			
G	130	145	175	195	195	215			
L2	70	68	78.5	78.5	78.5	90			

注: 1. YFKA、YFKF、YFKAF、YFKAZ壳体为通用件, 安装尺寸均可相互参照。 2. "YFK.." 表示YFK、YFKA、YFKF、YFKAF、YFKAZ、YFKAB。
Note: 1. The housings of YFKA、YFKF、YFKAF、YFKAZ are common parts. The mounting dimensions may consult each other.
2. "YFK.." mean YFK、YFKA、YFKF、YFKAF、YFKAZ、YFKAB.

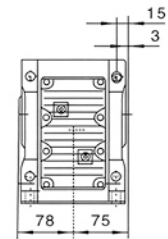
★查表: 15 Seetable: 15 查表15: i=34~106.5查AD1 i=5.3~34查AD2

注: 其余尺寸见
相对应结构
形式
Note: For other
values please
refer to the o-
posedited struc-
ture.

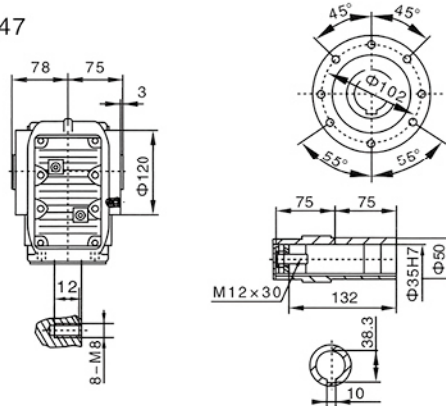
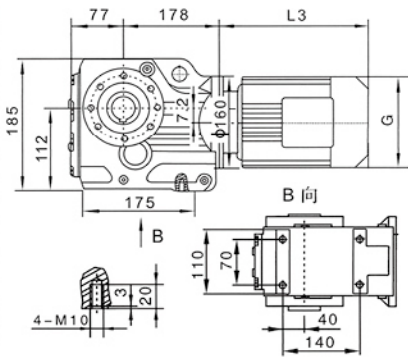
YFK47



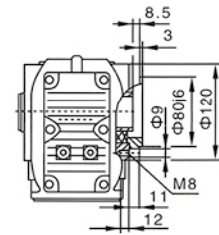
YFKA47B



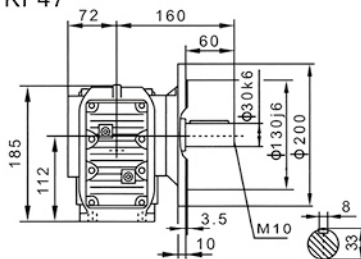
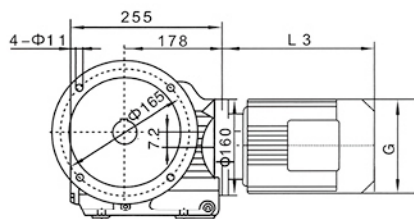
YFKA47



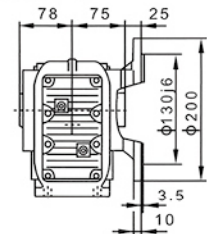
YFKAZ47



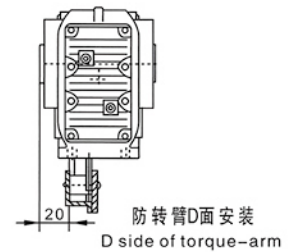
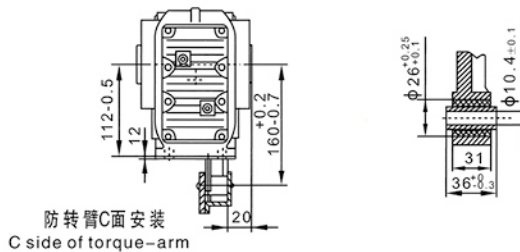
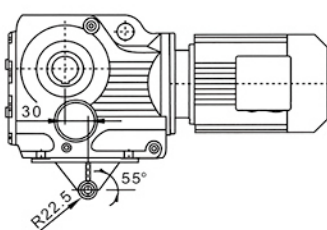
YFKF47



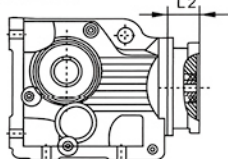
YFKAF47



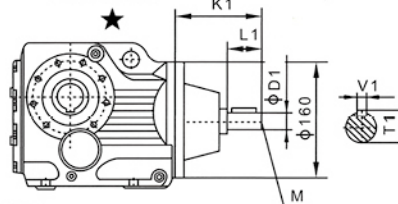
YFKA47/T



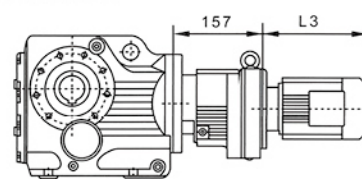
电机需方配或配特殊电机时
需加联接法兰



YFK..S47



YFK..47R37



注：其余尺寸见
相对应结构
形式

Note: For other
values please
refer to the o-
pposited stru-
cture.

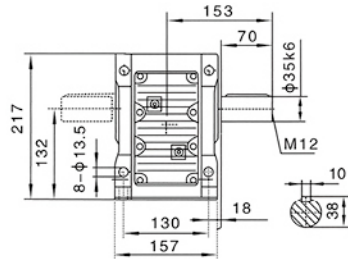
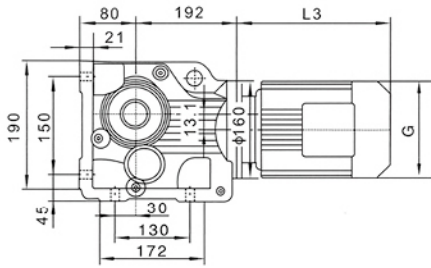
When equipping the user's motor or the special
one, the flange is required to connected.

Y2电机座号 Motor size	63	71	80	90S	90L	100			
功率/4P Power/(kW)	0.18	0.25 0.37	0.55 0.75	1.1	1.5	2.2 3.0			
L3	223	244	293	304	329	357			
G	130	145	175	195	195	215			
L2	70	84	85	85	85	91			

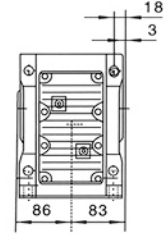
注: 1. YFKA、YFKF、YFKAF、YFKAZ壳体为通用件, 安装尺寸均可相互参照。 2. "YFK.."表示YFK、YFKA、YFKF、YFKAF、YFKAZ、YFKAB。
Note: 1. The housings of YFKA、YFKF、YFKAF、YFKAZ are common parts. The mounting dimensions may consult each other.
2. "YFK.." mean YFK、YFKA、YFKF、YFKAF、YFKAZ、YFKAB.

★查表: 15 Seetable: 15 查表15: i=9-132查AD2 i=5.8-9查AD3

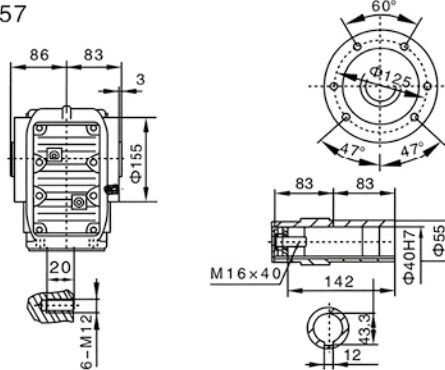
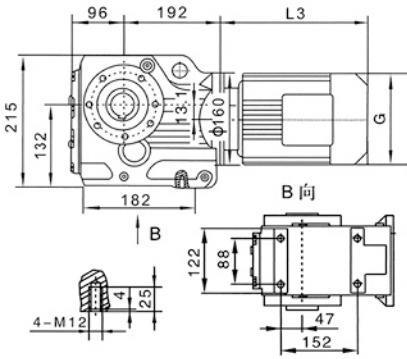
YFK57



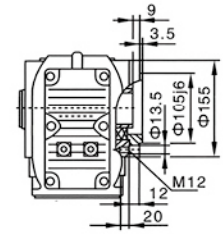
YFKA57B



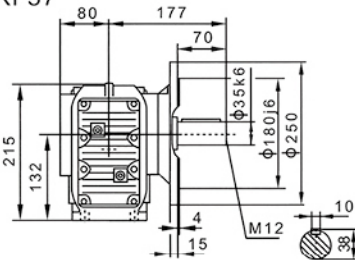
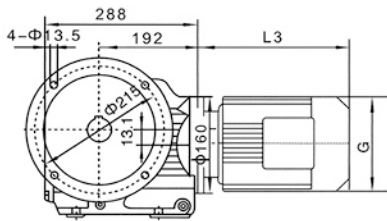
YFKA57



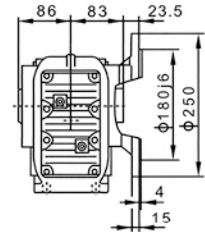
YFKAZ57



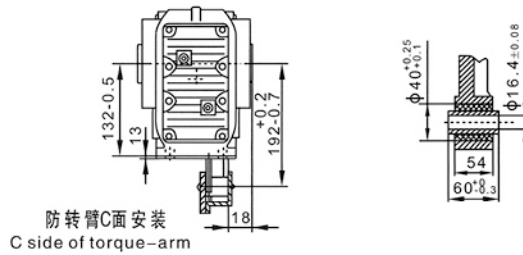
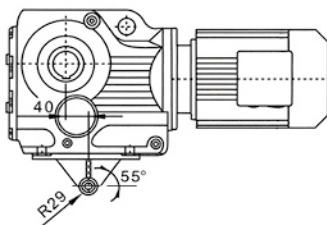
YFKF57



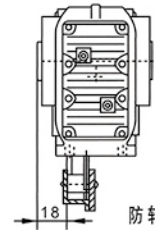
YFKAF57



YFKA57/T

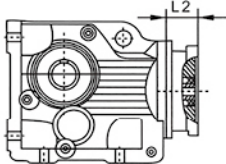


防转臂C面安装
C side of torque-arm

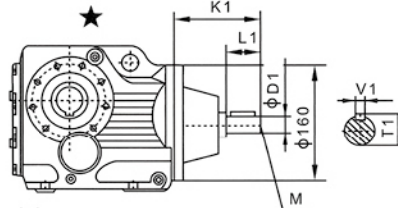


防转臂D面安装
D side of torque-arm

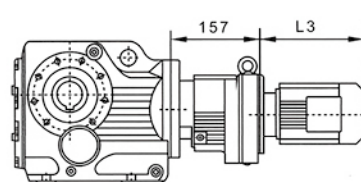
电机需方配或配特殊电机时需加联接法兰



YFK..S57



YFK..57R37



注: 其余尺寸见相对应结构形式

Note: For other values please refer to the opposed structure.

When equipping the user's motor or the special one, the flange is required to be connected.

Y2电机座号 Motor size	63	71	80	90S	90L	100	112M	132S		
功率/4P Power/(kW)	0.18	0.25 0.37	0.55 0.75	1.1	1.5	2.2 3.0	4.0	5.5		
L3	223	244	293	304	329	357	383	428		
G	130	145	175	195	195	215	240	275		
L2	70	84	85	85	85	91	91	112		

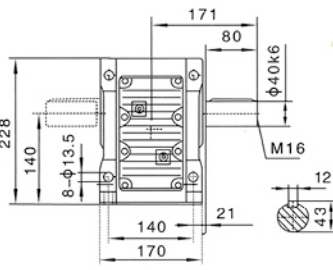
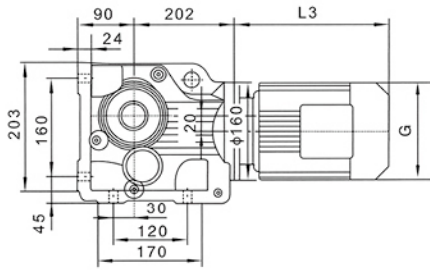
注: 1. YFKA、YFKF、YFKAF、YFKAZ壳体为通用件, 安装尺寸均可相互参照。 2. "YFK.." 表示YFK、YFKA、YFKF、YFKAF、YFKAZ、YFKAB。

Note: 1. The housings of YFKA、YFKF、YFKAF、YFKAZ are common parts. The mounting dimensions may consult each other.

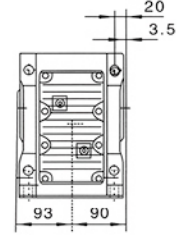
2. "YFK.." mean YFK、YFKA、YFKF、YFKAF、YFKAZ、YFKAB.

★查表: 15 Seetable: 15 查表15: i=16-145.2查AD2 i=6.5-16查AD3

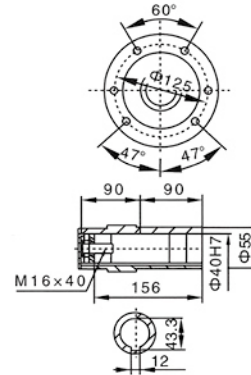
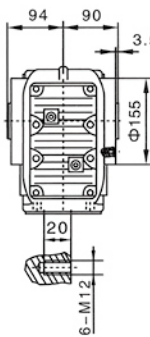
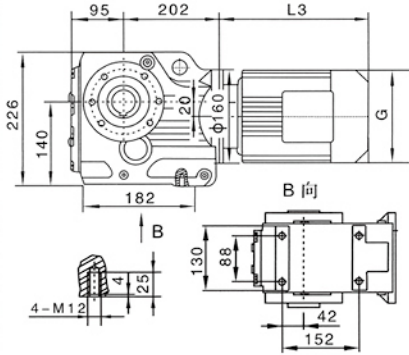
YFK67



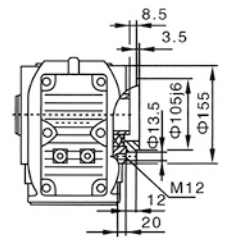
YFKA67B



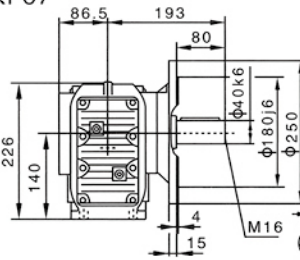
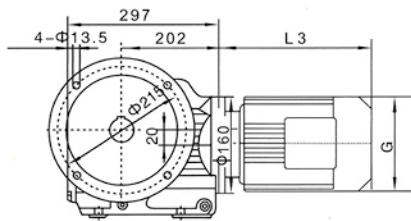
YFKA67



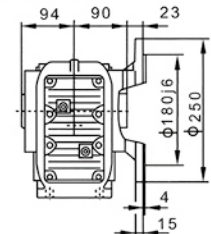
YFKAZ67



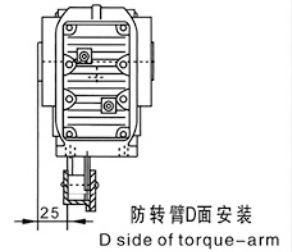
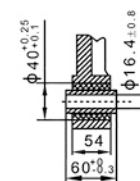
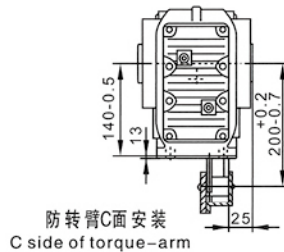
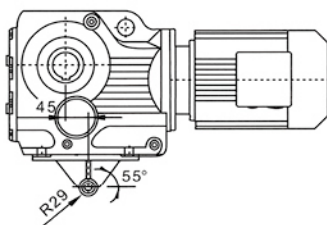
YFKF67



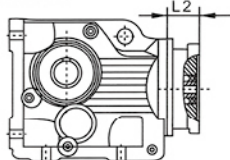
YFKAF67



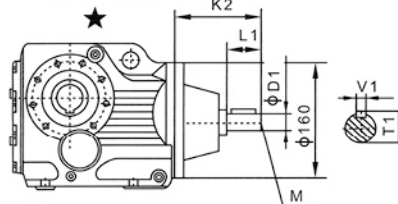
YFKA67/T



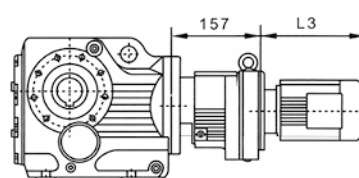
电机需方配或配特殊电机时需加联接法兰



YFK..S67



YFK..67R37



注: 其余尺寸见相对应结构形式

Note: For other values please refer to the o-pposited structure.

When equipping the user's motor or the special one, the flange is required to be connected.

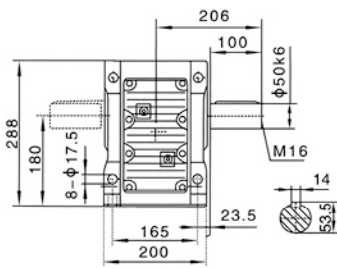
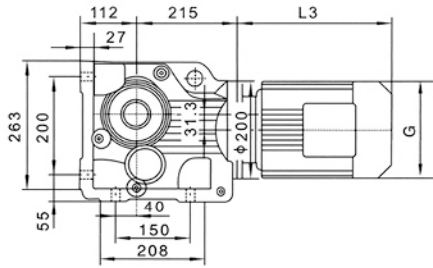
Y2电机座号 Motor size	63	71	80	90S	90L	100	112M	132S		
功率/4P Power/(kW)	0.18	0.25 0.37	0.55 0.75	1.1	1.5	2.2 3.0	4.0	5.5		
L3	223	244	293	304	329	357	383	428		
G	130	145	175	195	195	215	240	275		
L2	70	84	85	85	85	91	91	112		

注: 1. YFKA, YFKF, YFKAF, YFKAZ壳体为通用件, 安装尺寸均可相互参照。 2. "YFK.."表示YFK, YFKA, YFKF, YFKAF, YFKAZ, YFKAB。
Note: 1. The housings of YFKA, YFKF, YFKAF, YFKAZ are common parts. The mounting dimensions may consult each other.

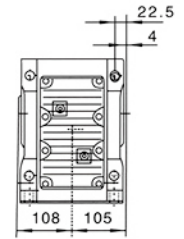
2. "YFK.." mean YFK, YFKA, YFKF, YFKAF, YFKAZ, YFKAB.

★查表: 15 Seetable: 15 查表15: i=35-145查AD2 i=7.2-35查AD3

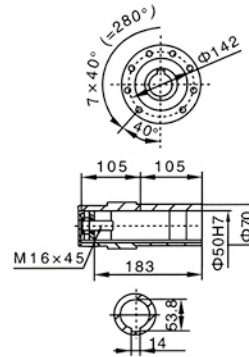
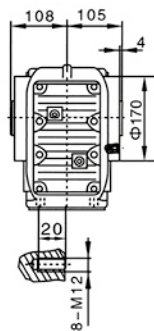
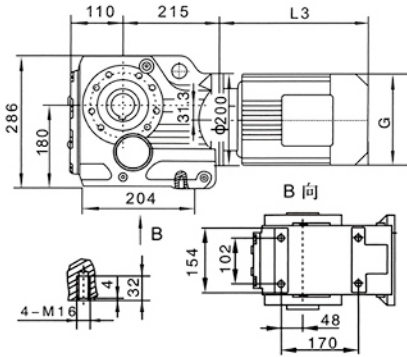
YFK77



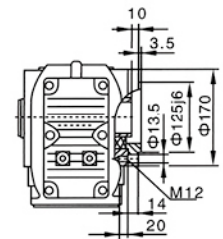
YFKA77B



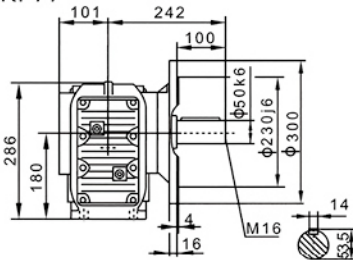
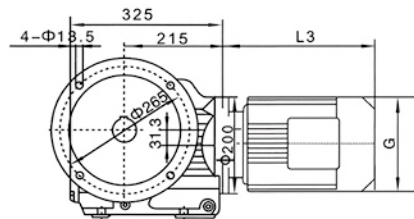
YFKA77



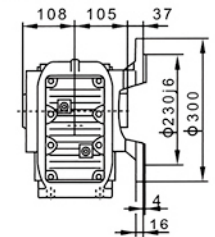
YFKAZ77



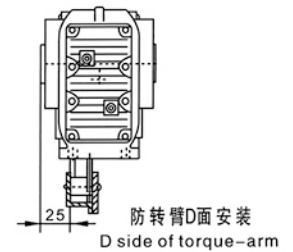
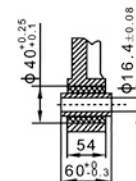
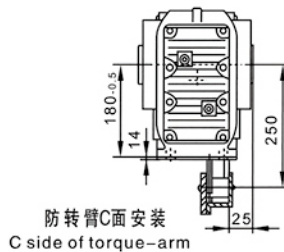
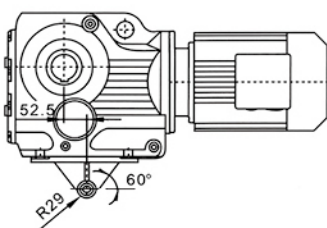
YFKF77



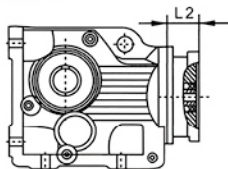
YFKAF77



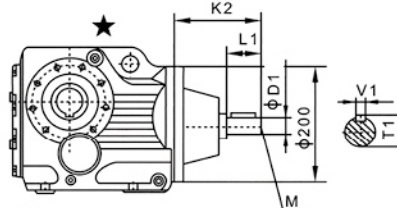
YFKA77/T



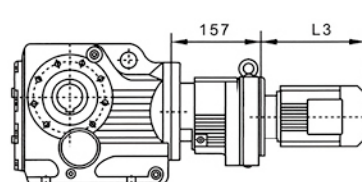
电机需方配或配特殊电机时需加联接法兰



YFK..S77



YFK..77R37



注: 其余尺寸见相对应结构形式
Note: For other values please refer to the o-posed structure.

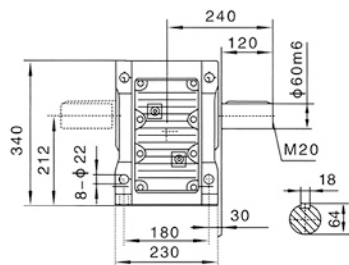
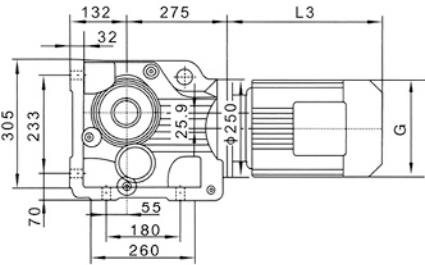
When equipping the user's motor or the special one, the flange is required to be connected.

Y2电机机座号 Motor size	71	80	90S	90L	100	112M	132S	132M	160M
功率/kW Power/(kW)	0.37	0.55 0.75	1.1	1.5	2.2 3.0	4.0	5.5	7.5	11
L3	237	292	297	322	354	391	430	463	555
G	145	175	195	195	215	240	275	275	330
L2	84	95	95	95	95	95	117	117	155

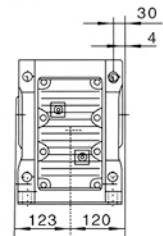
注: 1. YFKA、YFKF、YFKAF、YFKAZ壳体为通用件, 安装尺寸均可相互参照。 2. "YFK.." 表示YFK、YFKA、YFKF、YFKAF、YFKAZ、YFKAB。
Note: 1. The housings of YFKA、YFKF、YFKAF、YFKAZ are common parts. The mounting dimensions may consult each other.
2. "YFK.." mean YFK、YFKA、YFKF、YFKAF、YFKAZ、YFKAB.

★ 查表: 15 Seetable: 15 查表15: i=43-192查AD2 i=30-43查AD3 i=7.2-30查AD4

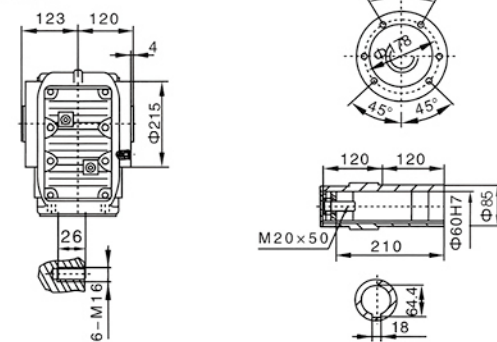
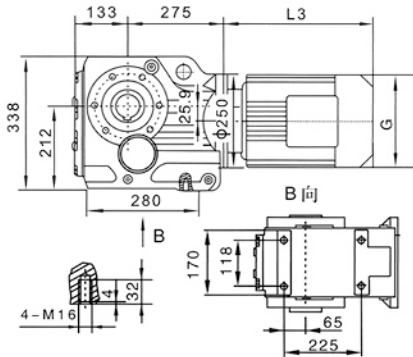
YFK87



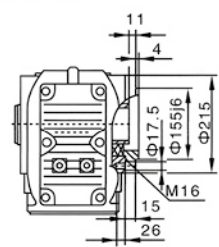
YFKA87B



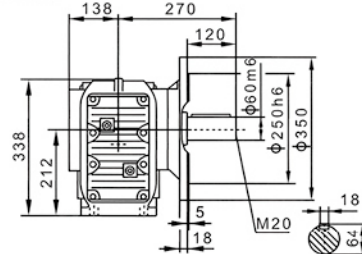
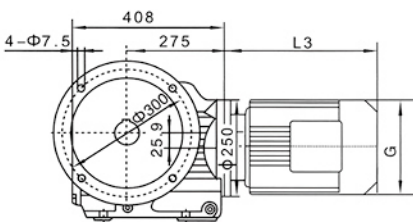
YFKA87



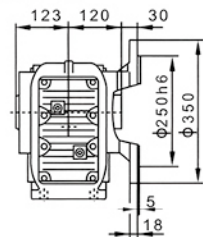
YFKAZ87



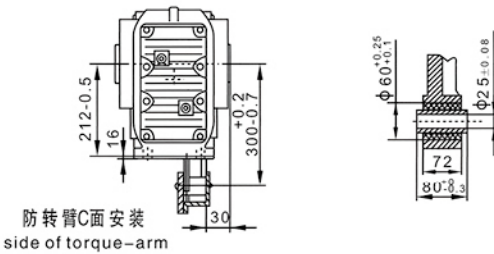
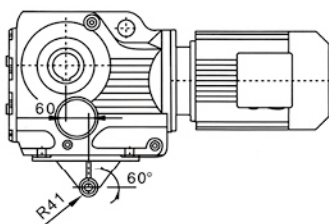
YFKF87



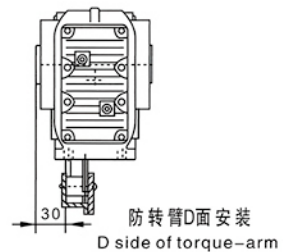
YFKAF87



YFKA87/T

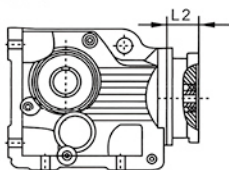


防转臂C面安装
C side of torque-arm

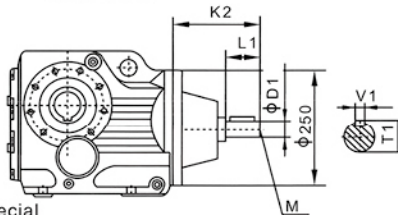


防转臂D面安装
D side of torque-arm

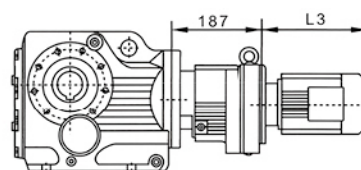
电机需方配或配特殊电机时
需加联接法兰



YFK..S87



YFK..87R57



注: 其余尺寸见
相对应结构
形式

Note: For other
values please
refer to the o-
pposited struc-
ture.

When equipping the user's motor or the special
one, the flange is required to be connected.

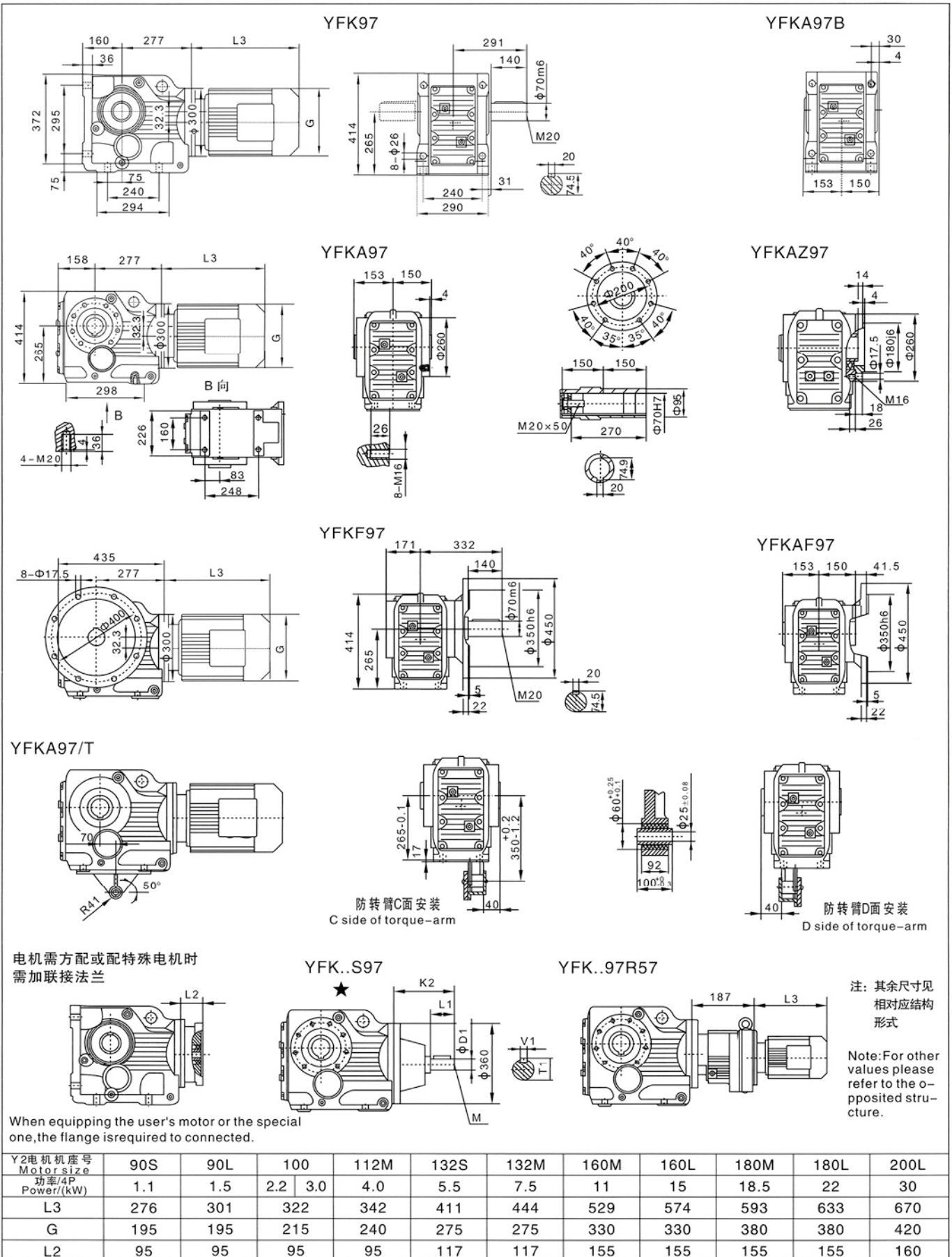
Y2电机机座号 Motor size	80	90S	90L	100	112M	132S	132M	160M	160L	180M	180L
功率/4P Power/(kW)	0.75	1.1	1.5	2.2	3.0	4.0	5.5	7.5	11	15	22
L3	261	284	309	351	371	417	450	538	583	612	652
G	175	195	195	215	240	275	275	330	330	380	380
L2	95	95	95	95	95	117	117	155	155	155	155

注: 1. YFKA, YFKF, YFKAF, YFKAZ 壳体为通用件, 安装尺寸均可相互参照。 2. "YFK.." 表示 YFK, YFKA, YFKF, YFKAF, YFKAZ, YFKAB.

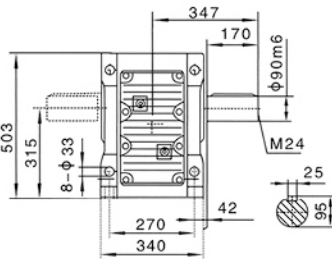
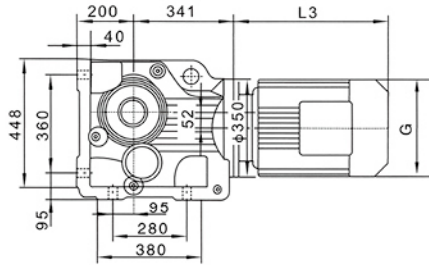
Note: 1. The housings of YFKA, YFKF, YFKAF, YFKAZ are common parts. The mounting dimensions may consult each other.

2. "YFK.." mean YFK, YFKA, YFKF, YFKAF, YFKAZ, YFKAB.

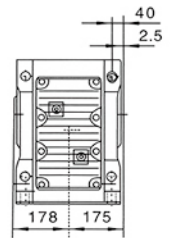
★查表: 15 Seetable: 15 查表15: i=84-197.4查AD2 i=33-84查AD3 i=11-33查AD4 i=7.2-11查AD5



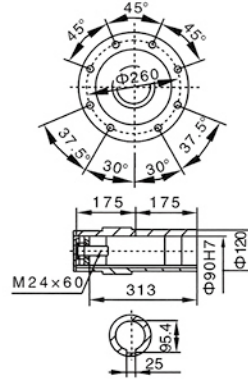
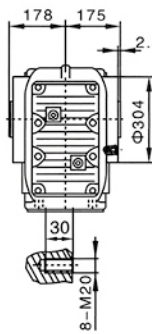
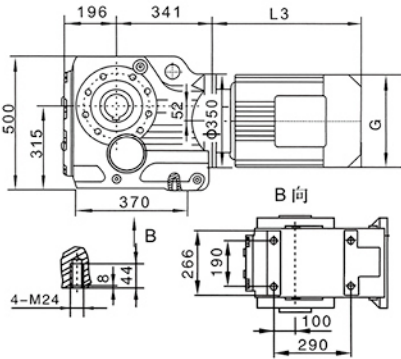
YFK107



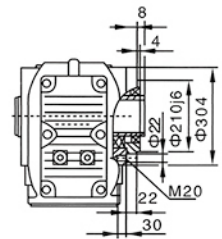
YFKA107B



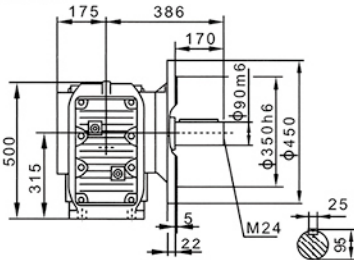
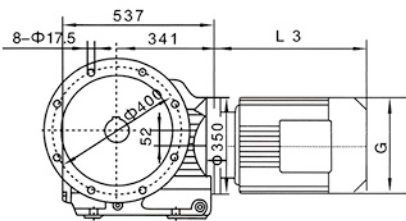
YFKA107



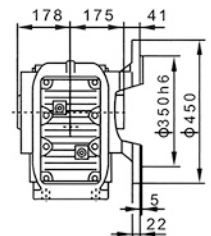
YFKAZ107



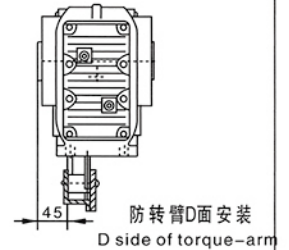
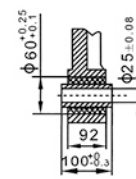
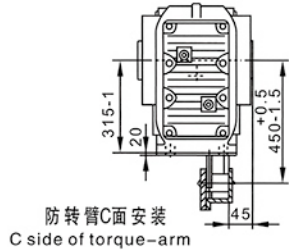
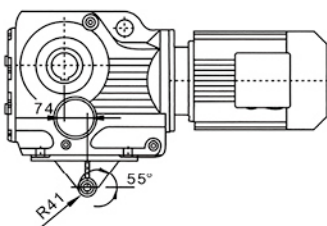
YFKF107



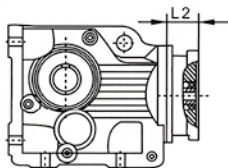
YFKAF107



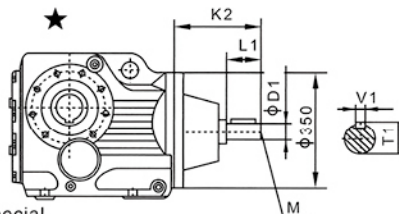
YFKA107/T



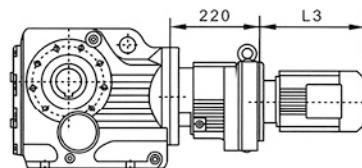
电机需方配或配特殊电机时
需加联接法兰



YFK..S107



YFK..107R77



注: 其余尺寸见
相对应结构
形式

Note: For other values please refer to the opposed structure.

When equipping the user's motor or the special one, the flange is required to be connected.

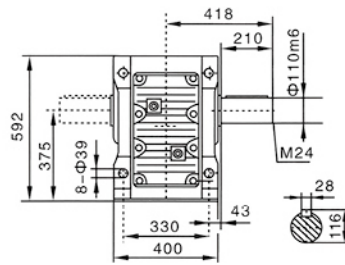
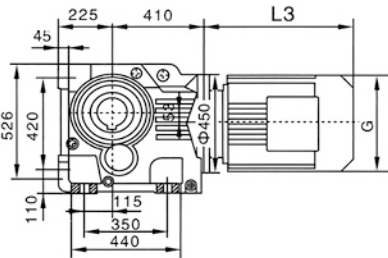
Y2电机机座号 Motor size	100	112M	132S	132M	160M	160L	180M	180L	200L	225S	225M
功率/4P Power/(kW)	3.0	4.0	5.5	7.5	11	15	18.5	22	30	37	45
L3	325	342	397	430	518	563	593	632	670	684	709
G	215	240	275	275	330	330	380	380	420	470	470
L2	95	95	117	117	155	155	155	155	160	190	190

注: 1. YFKA, YFKF, YFKAF, YFKAZ壳体为通用件, 安装尺寸均可相互参照。 2. "YFK.." 表示YFK, YFKA, YFKF, YFKAF, YFKAZ, YFKAB。
Note: 1. The housings of YFKA, YFKF, YFKAF, YFKAZ are common parts. The mounting dimensions may consult each other.

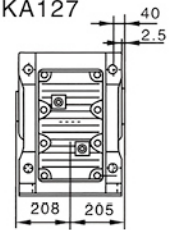
2. "YFK.." mean YFK, YFKA, YFKF, YFKAF, YFKAZ, YFKAB.

★查表: 15 Seetable: 15 查表15: i=47-143.5查AD4 i=30-47查AD5 i=8.6-30查AD6

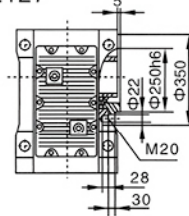
YFK127
YFKA127



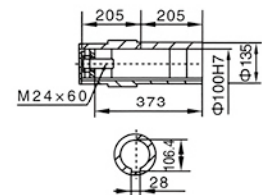
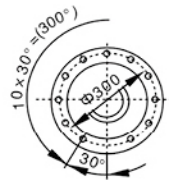
YFKA127B
YFKA127



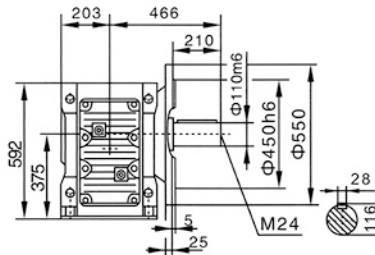
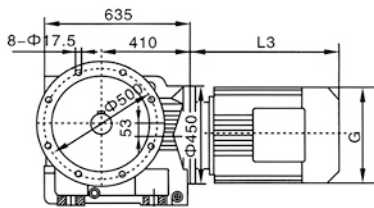
YFKAZ127



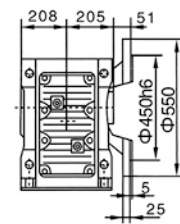
YFKA127B/YFKAZ127/YFKAF127/YFKAZ127
空心轴/Hollow shaft



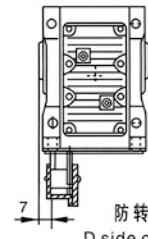
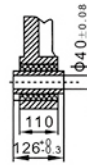
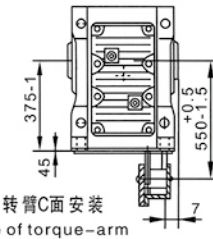
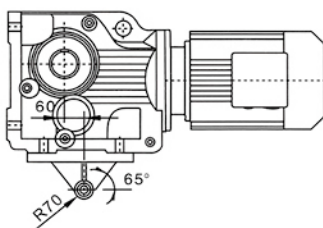
YFKF127



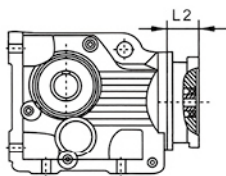
YFKAF127



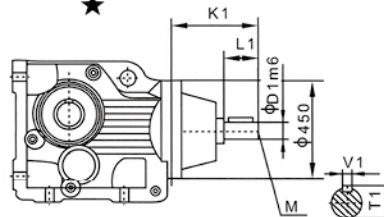
YFKA127/T



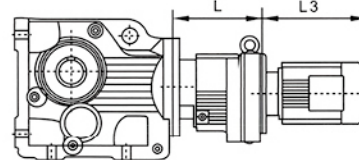
电机需方配或配特殊电机时需加联接法兰



YFK..S127



YFK..127R77 (87)



注: 其余尺寸见
相对应结构
形式

Note: For other
values please
refer to the o-
pposited struc-
ture.

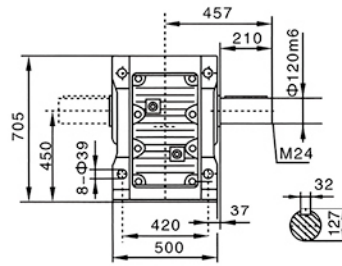
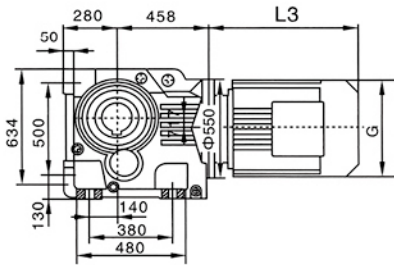
When equipping the user's motor or the special one, the flange is required to be connected.

Y2电机座号 Motor size	YFK..S127						YFK..127R77		YFK..127R87		280S	280M
	132M	160M	160L	180M	180L	200L	L	L	L	L		
功率/4P Power/(kW)	7.5	11	15	18.5	22	30	37	45	55	75	90	
L3	429	490	583	693	633	658	678	703	784	847	847	
G	275	330	330	380	380	420	470	470	510	580	580	
L2	55	93	93	93	93	93	115	115	120	120	120	

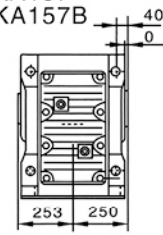
注: 1. YFKA, YFKF, YFKAF, YFKAZ壳体为通用件, 安装尺寸均可相互参照。 2. "YFK.."表示YFK, YFKA, YFKF, YFKAF, YFKAZ, YFKAB。
Note: 1. The housings of YFKA, YFKF, YFKAF, YFKAZ are common parts. The mounting dimensions may consult each other.
2. "YFK.." mean YFK, YFKA, YFKF, YFKAF, YFKAZ, YFKAB.

★查表: 15 Seetable: 15 查表15: i=105-146.1查AD4 i=47-105查AD5 i=38-47查AD6 i=23-38查AD7 i=8.6-23查AD8

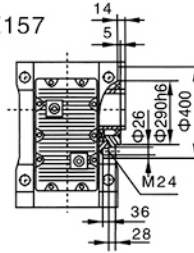
YFK157
YFKA157



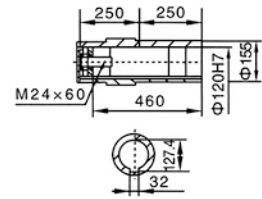
YFKA157
YFKA157B



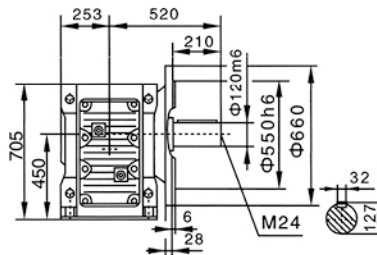
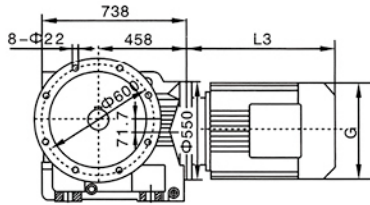
YFKAZ157



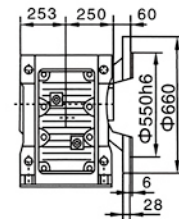
YFKAZ157/YFKAF157/YFKAZ157
空心轴/Hollow shaft



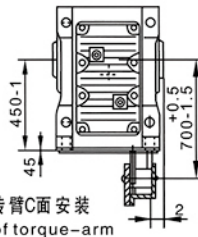
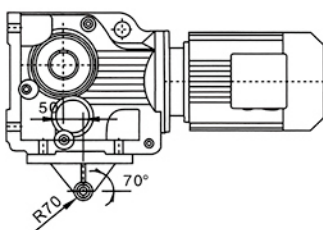
YFKF157



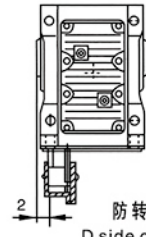
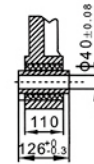
YFKAF157



YFKA157/T

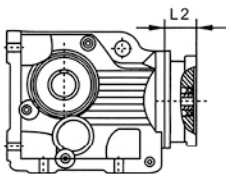


防转臂C面安装
C side of torque-arm

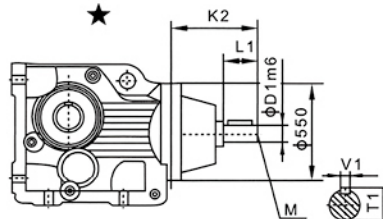


防转臂D面安装
D side of torque-arm

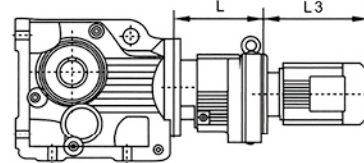
电机需方配或配特殊电机时
需加联接法兰



YFK..S157



YFK..157R97(R107)



注:其余尺寸见
相对应结构
形式

Note:For other
valude please
refer to the o-
pposited stru-
cture.

When equipping the user's motor or the special
one,the flange isrequired to be connected.

	Stk...157R97	Stk...157R107
L	320	355

Y2电机座号 Motor size 功率/4P Power/(kw)	160M	160L	180M	180L	200L	225S	225M	250M	280S	280M	315S	315M	315L
L3	492	537	593	633	646	673	698	779	847	847	1100	1180	1270
G	330	330	380	380	420	470	470	510	580	580	645	645	645
L2	155	155	155	155	160	190	190	190	190	190	190	190	190

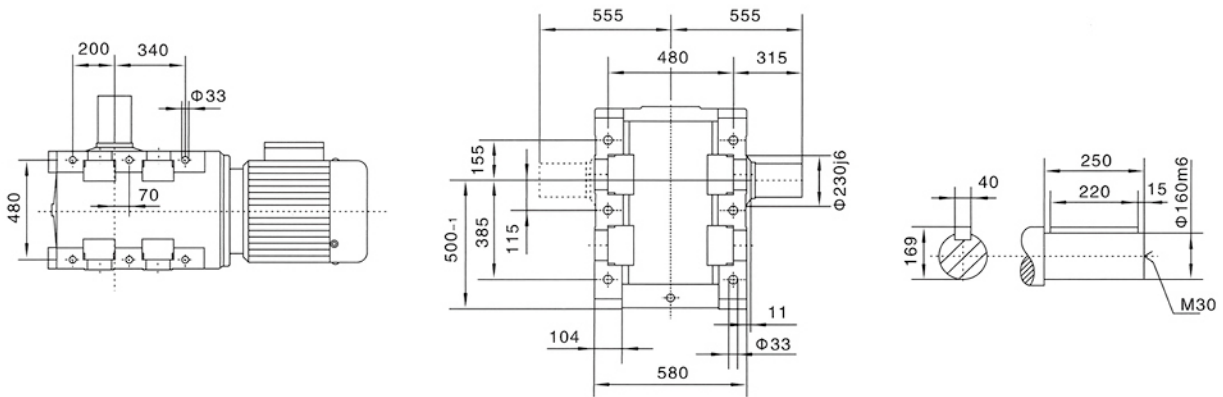
注:1.YFKA、YFKF、YFKAF、YFKAZ壳体为通用件,安装尺寸均可相互参照。 2."YFK.."表示YFK、YFKA、YFKF、YFKAF、YFKAZ、YFKAB。

Note:1.The housings of YFKA、YFKF、YFKAF、YFKAZ are common parts.The mounting dimensions may consult each other.

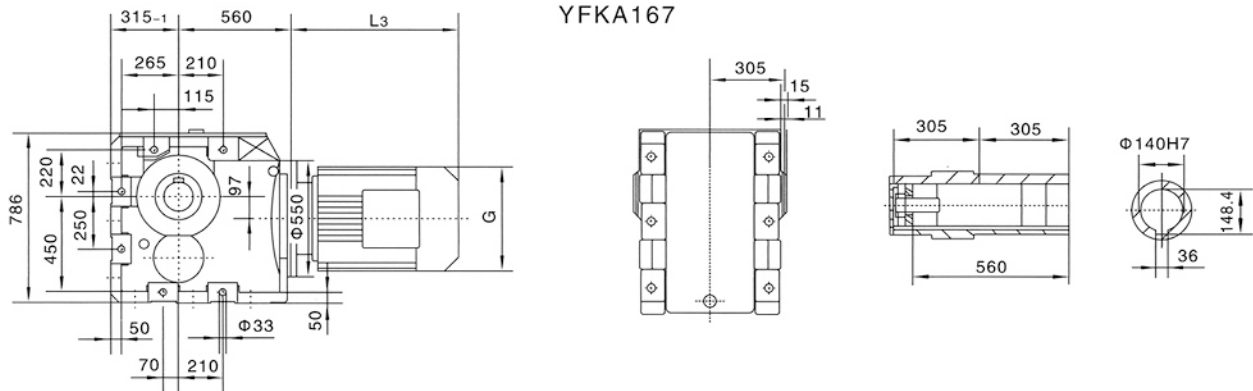
2."YFK.." mean YFK、YFKA、YFKF、YFKAF、YFKAZ、YFKAB.

★查表: 15 Seetable:15查表15: i=61-150.5查AD5 i=50-61查AD6 i=35-50查AD7 i=12-35查AD8

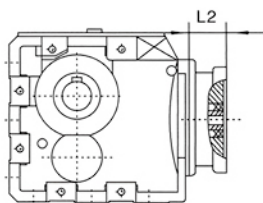
YFK167



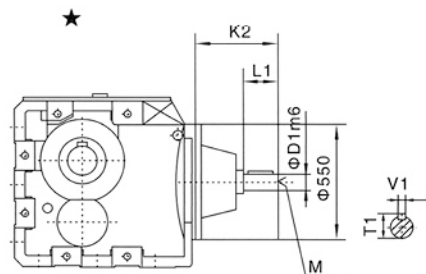
YFKA167



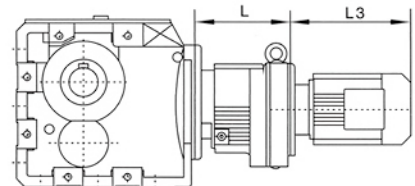
电机需方配或配特殊电机时
需加联接法兰



YFK..S167



YFK..167R97(R107)



When equipping the user's motor or the special one, the flange is required to be connected.

注:其余尺寸见相对应结构形式

Note: For other values please refer to the opposed structure.

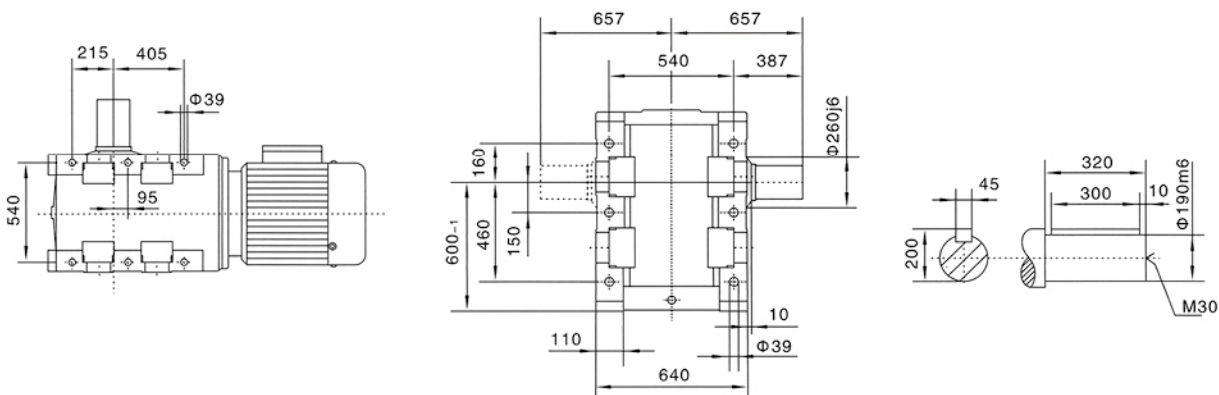
Y2电机座号 Motor size	160M	160L	180M	180L	200L	225S	225M	250M	280S	YFK.. 167R97		YFK.. 167R107	
										L	320	355	
功率/4P Power/(kW)	11	15	18.5	22	30	37	45	55	75	90	110	132	160 200
L3	492	537	593	633	646	673	698	779	847	847	1100	1180	1270
G	330	330	380	380	420	470	470	510	580	580	645	645	645
L2	155	155	155	155	160	190	190	190	190	190	190	190	190

注:1.YFKA、YFKF、YFKAF、YFKAZ壳体为通用件,安装尺寸均可相互参照。 2."YFK.."表示YFK、YFKA、YFKF、YFKAF、YFKAZ、YFKAB。
Note:1.The housings of YFKA、YFKF、YFKAF、YFKAZ are common parts.The mounting dimensions may consult each other.

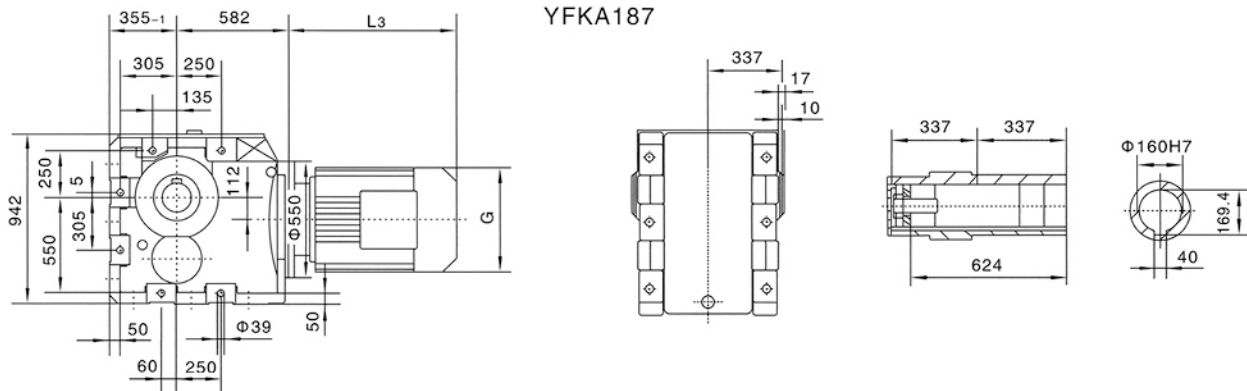
2."YFK.." mean YFK、YFKA、YFKF、YFKAF、YFKAZ、YFKAB.

★查表: 15 Seetable:15 查表15: i=135~164.5查AD5 i=102~135 查AD6 i=57~102查AD7 i=17.3~57查AD8

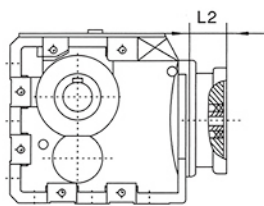
YFK187



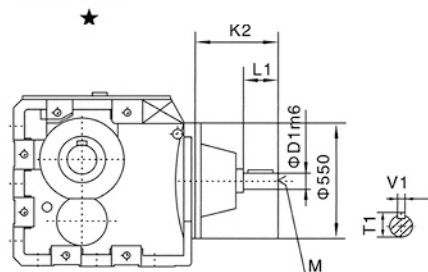
YFKA187



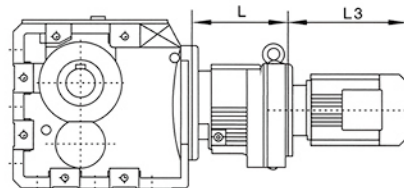
电机需方配或配特殊电机时
需加联接法兰



YFK..S187



YFK..187R97(107)



When equipping the user's motor or the special one, the flange is required to be connected.

注:其余尺寸见相对应结构形式

Note: For other values please refer to the opposed structure.

Y2电机座号 Motor size	功率/4P Power/(kW)	L3	G	L2	YFK..S187					YFK..187R97		YFK..187R107					
					160M	160L	180M	180L	200L	225S	225M	250M	280S	280M	315S	315M	315L
					160	190	190	190	190	190	320	355					
					155	155	155	155	155	155	190	190	190	190			
					492	537	593	633	646	673	698	779	847	847	1100	1180	1270
					330	330	380	380	420	470	470	510	580	580	645	645	645
					11	15	18.5	22	30	37	45	55	75	90	110	132	160
					160M	160L	180M	180L	200L	225S	225M	250M	280S	280M	315S	315M	315L

注:1.YFKA、YFKF、YFKAF、YFKAZ壳体为通用件,安装尺寸均可相互参照。 2."YFK.."表示YFK、YFKA、YFKF、YFKAF、YFKAZ、YFKAB。

Note:1.The housings of YFKA、YFKF、YFKAF、YFKAZ are common parts.The mounting dimensions may consult each other.

2."YFK.." mean YFK、YFKA、YFKF、YFKAF、YFKAZ、YFKAB.

★查表: 15 Seetable:15 查表15: i=141~179.9查AD6 i=98~141查AD7 i=17.1~98查AD8